

Recombinant Human CCNDBP1 Protein, GST-Tagged

Cat. No. CCNDBP1-0663H Lot. No. (See product label)

SPECIFICATION

Product Overview	Human CCNDBP1 full-length ORF (AAH09689.1, 1 a.a. - 360 a.a.) recombinant protein with GST-tag at N-terminal.
Species	Human
Source	Wheat Germ
Description	This gene was identified by the interaction of its gene product with Grap2, a leukocyte-specific adaptor protein important for immune cell signaling. The protein encoded by this gene was shown to interact with cyclin D. Transfection of this gene in cells was reported to reduce the phosphorylation of Rb gene product by cyclin D-dependent protein kinase, and inhibit E2F1-mediated transcription activity. This protein was also found to interact with helix-loop-helix protein E12 and is thought to be a negative regulator of liver-specific gene expression. Several alternatively spliced variants have been found for this gene. [provided by RefSeq, Apr 2009]
Molecular Mass	66.7 kDa
AA Sequence	MASATAPAAAVPTLASPLEQLRHLAEELRLLLPRVRVGEAQETTEEFNREMFWRRL NEAAVTVSREATTLTIVFSQLPLPSPQETQKFCEQVHAAIKAFIAVYYLLPKDQGITLR KLVRGATLDIVDGMAMLMEVLSVTPTQSPENNDLISYNSVWVACQQMPQIPRDNKA AALLMLTKNVDFVKDAHEEMEQAVEECDPYSGLLNDTEENNSDNHNEHDDVVGFP SNQDLYWSEDDQELIIPCLALVRASKACLKIRMLVAENGGKDKQVAQLDDIVDISDEIS PSVDDLALSIPPCHLTVRINSAKLVSVLKKALEITKASHVTPQPEDSWIPLLINAIDH

 Tel: 1-631-559-9269 1-516-512-3133

 Email: info@creative-biomart.com  Fax: 1-631-938-8127

 45-1 Ramsey Road, Shirley, NY 11967, USA

CMNRIKELTQSELEL

Applications

Enzyme-linked Immunoabsorbent Assay
 Western Blot (Recombinant protein)
 Antibody Production
 Protein Array

Storage

Store at -80 centigrade. Aliquot to avoid repeated freezing and thawing.

Storage Buffer

50 mM Tris-HCl, 10 mM reduced Glutathione, pH=8.0 in the elution buffer.

GENE INFORMATION

Gene Name

CCNDBP1 cyclin D-type binding-protein 1 [Homo sapiens]

Official Symbol

CCNDBP1

Synonyms

CCNDBP1; cyclin D-type binding-protein 1; cyclin-D1-binding protein 1; D type cyclin interacting protein 1; DIP1; GCIP; grap2 cyclin interacting protein; HHM Protein; MAID protein; human homolog of Maid; D-type cyclin-interacting protein 1; grap2 and cyclin-D-interacting protein; HHM;

Gene ID

23582

mRNA Refseq

NM_012142

Protein Refseq

NP_036274

MIM

607089

UniProt ID

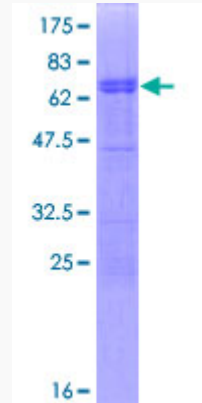
O95273

 Tel: 1-631-559-9269 1-516-512-3133

 Email: info@creative-biomart.com  Fax: 1-631-938-8127

 45-1 Ramsey Road, Shirley, NY 11967, USA

**Quality Control
Testing**



12.5% SDS-PAGE Stained with Coomassie Blue.

 Tel: 1-631-559-9269 1-516-512-3133

 Email: info@creative-biomart.com  Fax: 1-631-938-8127

 45-1 Ramsey Road, Shirley, NY 11967, USA