

Recombinant Human cyclin E1 protein, His tagged

Cat. No. CCNE1-001H Lot. No. (See product label)

SPECIFICATION

Product Overview	Recombinant Human cyclin E1 protein (16-143 aa) with His tag was expressed in E. coli.
Species	Human
Source	E.coli
ProteinLength	16-143 aa
Description	<p>The protein encoded by this gene belongs to the highly conserved cyclin family, whose members are characterized by a dramatic periodicity in protein abundance through the cell cycle. Cyclins function as regulators of CDK kinases. Different cyclins exhibit distinct expression and degradation patterns which contribute to the temporal coordination of each mitotic event. This cyclin forms a complex with and functions as a regulatory subunit of CDK2, whose activity is required for cell cycle G1/S transition. This protein accumulates at the G1-S phase boundary and is degraded as cells progress through S phase. Overexpression of this gene has been observed in many tumors, which results in chromosome instability, and thus may contribute to tumorigenesis. This protein was found to associate with, and be involved in, the phosphorylation of NPAT protein (nuclear protein mapped to the ATM locus), which participates in cell-cycle regulated histone gene expression and plays a critical role in promoting cell-cycle progression in the absence of pRB.</p>
Molecular Mass	14.7 kDa

 Tel: 1-631-559-9269 1-516-512-3133

 Email: info@creative-biomart.com  Fax: 1-631-938-8127

 45-1 Ramsey Road, Shirley, NY 11967, USA

AA Sequence	MKEDGGAEFSARSRKRKANVTVFLQDPDEEMAKIDRTARDQCGSQPWDNNAVCA DPCSLIPTPKEDDDRVPNSTCKPRIIAPSRGSPLPVLWANREEVWKIMLNKEKT YLRDQHFLEQHPLLQPKHHHHHHHH
Endotoxin	< 2 EU/μg by LAL.
Purity	> 65 % by SDS-PAGE
Storage	Store it under sterile conditions at -20 to -80 centigrade. It is recommended that the protein be aliquoted for optimal storage. Avoid repeated freeze-thaw cycles.
Storage Buffer	Sterile PBS, pH7.4
Concentration	0.2 mg/mL

GENE INFORMATION

Gene Name	CCNE1 cyclin E1 [Homo sapiens (human)]
Official Symbol	CCNE1
Synonyms	CCNE1; cyclin E1; CCNE; G1/S-specific cyclin-E1; cyclin Es; cyclin Et
Gene ID	898
mRNA Refseq	NM_001238
Protein Refseq	NP_001229
MIM	123837

 Tel: 1-631-559-9269 1-516-512-3133

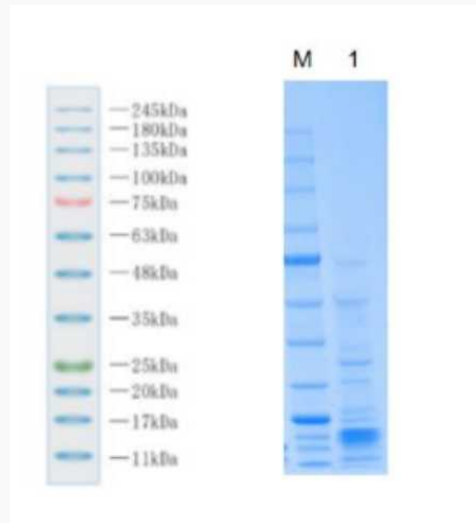
 Email: info@creative-biomart.com  Fax: 1-631-938-8127

 45-1 Ramsey Road, Shirley, NY 11967, USA

UniProt ID

P24864

Reducing 4 %-20 %
SDS-PAGE (CBB
stained) analysis
profile of purified
CCNE1.



 Tel: 1-631-559-9269 1-516-512-3133

 Email: info@creative-biomart.com  Fax: 1-631-938-8127

 45-1 Ramsey Road, Shirley, NY 11967, USA