

## Active Recombinant Human CCNE1 protein

**Cat. No.** CCNE1-2230H    **Lot. No.** (See product label)

### SPECIFICATION

<b>Product Overview</b>	Active Recombinant Human CCNE1 protein(NP_001229.1) (Met 1-Ala 410) was expressed and purified in Insect Cells with two additional amino acids (Gly & ) at the N-terminus.
<b>Species</b>	Human
<b>Source</b>	Insect Cells
<b>ProteinLength</b>	1-410 aa
<b>Form</b>	Lyophilized from sterile 20mM Tris, 500mM NaCl, 10% glycerol, pH 7.4.
<b>Bio-activity</b>	Measured by its binding ability in a functional ELISA. Immobilized human CCNE1 at 10 µg/ml (100 µl/well) can bind biotinylated human GST-CDK4, The EC50 of biotinylated human GST-CDK4 is 0.55-1.29 µg/ml.
<b>Molecular Mass</b>	The secreted recombinant human CCNE1 consists of 412 amino acids and predicts a molecular mass of 47.2 KDa. The apparent molecular mass of the protein is approximately 48 KDa in SDS-PAGE under reducing conditions due to glycosylation.
<b>Endotoxin</b>	< 1.0 EU per µg of the protein as determined by the LAL method.
<b>Purity</b>	> 90 % as determined by SDS-PAGE
<b>Storage</b>	Store it under sterile conditions at -20°C to -80°C upon receiving. Recommend to

 Tel: 1-631-559-9269    1-516-512-3133

 Email: [info@creative-biomart.com](mailto:info@creative-biomart.com)     Fax: 1-631-938-8127

 45-1 Ramsey Road, Shirley, NY 11967, USA

aliquot the protein into smaller quantities for optimal storage. Avoid repeated freeze-thaw cycles.

**Reconstitution**

It is recommended that sterile water be added to the vial to prepare a stock solution of 0.2 ug/ul. Centrifuge the vial at 4°C before opening to recover the entire contents.

**protein Refseq-Weblink**

[http://www.ncbi.nlm.nih.gov/protein/NP\\_001229.1](http://www.ncbi.nlm.nih.gov/protein/NP_001229.1)

**Unit ID**

P24864

**Unit ID-Weblink**

<http://www.uniprot.org/uniprot/P24864>

## GENE INFORMATION

**Gene Name**

CCNE1 cyclin E1 [ Homo sapiens ]

**Official Symbol**

CCNE1

**Synonyms**

CCNE1; cyclin E1; CCNE; G1/S-specific cyclin-E1; cyclin Es; cyclin Et;

**Gene ID**

898

**mRNA Refseq**

[NM\\_001238](#)

**protein Refseq**

NP\_001229

**MIM**

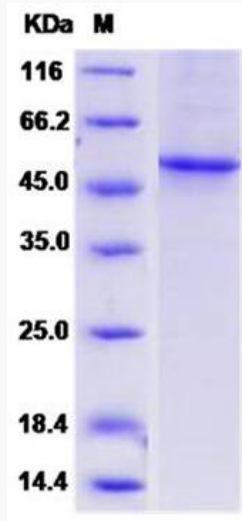
[123837](#)

 Tel: 1-631-559-9269 1-516-512-3133

 Email: [info@creative-biomart.com](mailto:info@creative-biomart.com)  Fax: 1-631-938-8127

 45-1 Ramsey Road, Shirley, NY 11967, USA

**SDS-PAGE**



 Tel: 1-631-559-9269 1-516-512-3133

 Email: [info@creative-biomart.com](mailto:info@creative-biomart.com)  Fax: 1-631-938-8127

 45-1 Ramsey Road, Shirley, NY 11967, USA