

Recombinant Human CCNE2 Protein, GST-Tagged

Cat. No. CCNE2-0667H Lot. No. (See product label)

SPECIFICATION

Product Overview Human CCNE2 full-length ORF (AAH20729, 1 a.a. - 374 a.a.) recombinant protein with GST-tag at N-terminal.

Species Human

Source Wheat Germ

Description The protein encoded by this gene belongs to the highly conserved cyclin family, whose members are characterized by a dramatic periodicity in protein abundance through the cell cycle. Cyclins function as regulators of CDK kinases. Different cyclins exhibit distinct expression and degradation patterns which contribute to the temporal coordination of each mitotic event. This cyclin forms a complex with and functions as a regulatory subunit of CDK2. This cyclin has been shown to specifically interact with CIP/KIP family of CDK inhibitors, and plays a role in cell cycle G1/S transition. The expression of this gene peaks at the G1-S phase and exhibits a pattern of tissue specificity distinct from that of cyclin E1. A significantly increased expression level of this gene was observed in tumor-derived cells. [provided by RefSeq, Jul 2008]

Molecular Mass 66.88 kDa

AA Sequence MSRRSSRLQAKQQPQPSQTESPQEAQIIQAKKRKTTQDVKKRREEVTKKHQYEIRN
CWPPVLSGGISPCIIIETPHKEIGTSDFSRFTNYRFKNLFINPSPLPDLSWGCSKEVWL
NMLKKESTRYVHDKHFEVLHSDLEPQMRSILLDWLLEVCEVYTLHRETFYLAQDFDR
FMLTQKDINKNMLQLIGITSLFIASKLEEIYAPKLQEFAYVTDGACSEEDILRMELIILKA

 Tel: 1-631-559-9269 1-516-512-3133

 Email: info@creative-biomart.com  Fax: 1-631-938-8127

 45-1 Ramsey Road, Shirley, NY 11967, USA



LKWELCPVTIISWLNFLQVDALKDAPKVLLPQYSQETFIQIAQLLDLCILAIIDSLEFQY
RILTAAALCHFTSIEVVKKASGLEWDSISECVDWMVPFVNVVKSTSPVKLKTFFKIPM
EDRHNIQTHTNYLAMLCMISSHV

Applications	Enzyme-linked Immunoabsorbent Assay Western Blot (Recombinant protein) Antibody Production Protein Array
Storage	Store at -80 centigrade. Aliquot to avoid repeated freezing and thawing.
Storage Buffer	50 mM Tris-HCl, 10 mM reduced Glutathione, pH=8.0 in the elution buffer.

GENE INFORMATION

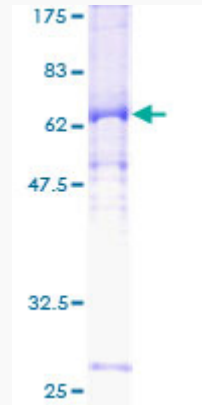
Gene Name	CCNE2 cyclin E2 [Homo sapiens]
Official Symbol	CCNE2
Synonyms	CCNE2; cyclin E2; G1/S-specific cyclin-E2; CYCE2;
Gene ID	9134
mRNA Refseq	NM_057749
Protein Refseq	NP_477097
MIM	603775
UniProt ID	O96020

Tel: 1-631-559-9269 1-516-512-3133

Email: info@creative-biomart.com Fax: 1-631-938-8127

45-1 Ramsey Road, Shirley, NY 11967, USA

**Quality Control
Testing**



12.5% SDS-PAGE Stained with Coomassie Blue.

 Tel: 1-631-559-9269 1-516-512-3133

 Email: info@creative-biomart.com  Fax: 1-631-938-8127

 45-1 Ramsey Road, Shirley, NY 11967, USA