

## Recombinant Human CCNE2 protein, GST-tagged

Cat. No. CCNE2-180H Lot. No. (See product label)

### SPECIFICATION

<b>Product Overview</b>	Recombinant Human CCNE2 fused with GST tag at N-terminal was expressed in Insect cells.
<b>Species</b>	Human
<b>Source</b>	Insect Cells
<b>Description</b>	CCNE2 is belongs to the cyclin family, Cyclin E subfamily. It is encoded by a separate gene from Cyclin E1, but shows substantial amino acid sequence similarity. Like Cyclin E1, it binds and activates the cyclin-dependent kinase 2 (Cdk2), which in turn phosphorylates proteins involved in cell cycle progression such as pRB, p107, NPM1, MCMs, thereby driving cell proliferation. A defect in spermatogenesis is the only phenotype observed in cyclin E2-deficient mice, suggesting its role in male fertility.
<b>Form</b>	50mM Tris-HCl, pH 7.5, 150mM NaCl, 10mM glutathione, 0.1mM EDTA, 0.25mM DTT, 0.1mM PMSF, 25% glycerol.
<b>Molecular Mass</b>	72 kDa
<b>Purity</b>	>70%
<b>Applications</b>	Western Blot
<b>Stability</b>	1 year at -70 centigrade from the date of shipment.

 Tel: 1-631-559-9269 1-516-512-3133

 Email: [info@creative-biomart.com](mailto:info@creative-biomart.com)  Fax: 1-631-938-8127

 45-1 Ramsey Road, Shirley, NY 11967, USA

**Storage**

Store product at –70 centigrade. For optimal storage, aliquot target into smaller quantities after centrifugation and store at recommended temperature. For most favorable performance, avoid repeated handling and multiple freeze/thaw cycles.

**Concentration**

0.05µg/µl

## GENE INFORMATION

**Gene Name**

CCNE2 cyclin E2 [ Homo sapiens ]

**Official Symbol**

CCNE2

**Synonyms**

CCNE2; cyclin E2; G1/S-specific cyclin-E2; CYCE2;

**Gene ID**

9134

**mRNA Refseq**

NM\_057749

**Protein Refseq**

NP\_477097

**MIM**

603775

**UniProt ID**

O96020

**Chromosome  
Location**

8q22.1

**Pathway**

Cell Cycle, organism-specific biosystem; Cell Cycle Checkpoints, organism-specific biosystem; Cell Cycle, Mitotic, organism-specific biosystem; Cell cycle, organism-specific biosystem; Cell cycle, organism-specific biosystem; Cell cycle, conserved biosystem; Cyclin A:Cdk2-associated events at S phase entry, organism-specific

 Tel: 1-631-559-9269 1-516-512-3133

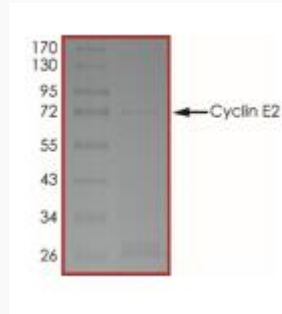
 Email: [info@creative-biomart.com](mailto:info@creative-biomart.com)  Fax: 1-631-938-8127

 45-1 Ramsey Road, Shirley, NY 11967, USA

biosystem;

**Function**

protein binding; protein kinase binding;



 Tel: 1-631-559-9269 1-516-512-3133

 Email: [info@creative-biomart.com](mailto:info@creative-biomart.com)  Fax: 1-631-938-8127

 45-1 Ramsey Road, Shirley, NY 11967, USA