

Recombinant Human CCNG1 Protein, GST-Tagged

Cat. No. CCNG1-0669H Lot. No. (See product label)

SPECIFICATION

Product Overview	Human CCNG1 full-length ORF (NP_004051.1, 1 a.a. - 295 a.a.) recombinant protein with GST-tag at N-terminal.
Species	Human
Source	Wheat Germ
Description	The eukaryotic cell cycle is governed by cyclin-dependent protein kinases (CDKs) whose activities are regulated by cyclins and CDK inhibitors. The protein encoded by this gene is a member of the cyclin family and contains the cyclin box. The encoded protein lacks the protein destabilizing (PEST) sequence that is present in other family members. Transcriptional activation of this gene can be induced by tumor protein p53. Two transcript variants encoding the same protein have been identified for this gene. [provided by RefSeq, Jul 2008]
Molecular Mass	60.5 kDa
AA Sequence	MIEVLTTTDSQKLLHQLNALLEQESRCQPKVCGLRLIESAHDNGLRMTARLRDFEVK DLLSLTQFFGFDTEFSLAVNLLDRFLSKMKVQPKHLGCVGLSCFYLAVKSIEEERNV PLATDLIRISQYRFTVSDLMRMEKIVLEKVCWKVKATTAFQFLQLYSSLQENLPLER RNSINFERLEAQLKACHCRIIFSKAKPSVLALSIIALEIQAQKCVELTEGIECLQKHSKIN GRDLTFWQELVSKCLTEYSSNKCSKPNVQKLKWIVSGRTARQLKHSYYRITHLPTIP EMVP
Applications	Enzyme-linked Immunoabsorbent Assay

 Tel: 1-631-559-9269 1-516-512-3133

 Email: info@creative-biomart.com  Fax: 1-631-938-8127

 45-1 Ramsey Road, Shirley, NY 11967, USA



Western Blot (Recombinant protein)
Antibody Production
Protein Array

Storage Store at -80 centigrade. Aliquot to avoid repeated freezing and thawing.

Storage Buffer 50 mM Tris-HCl, 10 mM reduced Glutathione, pH=8.0 in the elution buffer.

GENE INFORMATION

Gene Name CCNG1 cyclin G1 [Homo sapiens]

Official Symbol CCNG1

Synonyms CCNG1; cyclin G1; CCNG; cyclin-G1; cyclin-G;

Gene ID 900

mRNA Refseq NM_004060

Protein Refseq NP_004051

MIM 601578

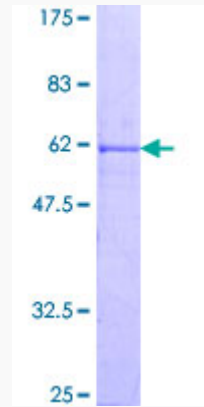
UniProt ID P51959

 Tel: 1-631-559-9269 1-516-512-3133

 Email: info@creative-biomart.com  Fax: 1-631-938-8127

 45-1 Ramsey Road, Shirley, NY 11967, USA

**Quality Control
Testing**



12.5% SDS-PAGE Stained with Coomassie Blue.

 Tel: 1-631-559-9269 1-516-512-3133

 Email: info@creative-biomart.com  Fax: 1-631-938-8127

 45-1 Ramsey Road, Shirley, NY 11967, USA