

Recombinant Human Cyclin H, His-tagged

Cat. No. CCNH-627H Lot. No. (See product label)

SPECIFICATION

Product Overview	Recombinant human Cyclin H, fused to His-tag at N-terminus, was expressed in <i>E.coli</i> and purified by using conventional chromatography techniques. 39.8 kDa (343aa).
Species	Human
Source	E.coli
Description	Cyclin H, also known as CDK7, is a member of the cyclin-dependent protein kinase family, whose members are characterized by a dramatic periodicity in protein abundance through the cell cycle. Cyclins function as regulators of CDK kinases. Different cyclins exhibit distinct expression and degradation patterns which contribute to the temporal coordination of each mitotic event. Cyclin H forms a trimeric complex with cyclin H and MAT1, which functions as a CDK-activating kinase (CAK). Cyclin H is an essential component of the transcription factor TFIIH that is involved in transcription initiation and DNA repair.
Form	Liquid. In 20mM Tris-HCl buffer (pH 8.0) containing 2mM DTT, 30% glycerol, 2mM EDTA, 0.1M NaCl.
Purity	> 90% by SDS – PAGE.
Concentration	1mg/ml (determined by Bradford assay).
Sequences Of Amino	MGSSHHHHHH SSGLVPRGSH MYHNSSQKRH WTFSSSEQLA RLRADANRKF

 Tel: 1-631-559-9269 1-516-512-3133

 Email: info@creative-biomart.com  Fax: 1-631-938-8127

 45-1 Ramsey Road, Shirley, NY 11967, USA

Acids

RCKAVANGKV LPNDPVFLEP HEEMTLCKYY EKRLLFCSVFKPAMPRSVV
 GTACMYFKRF YLNNSVMEYH PRIIMLTCAF LACKVDEFNV SSPQFVGNLR ESPLG
 QEKAL EQILEYELLQ IQQLNFHLIV HNPYRPFEGF LIDLKTRYPI LENPEILRKT
 ADDFLNRIAL TDAYLLYTPS QIALTAILSS ASRAGITMES YLSESLMLKE NRTC
 LSQLLDIMKSMRNLVK KYEPPRSEEV AVLKQKLERC HSAELALNVI TKKRK
 GYEDD DYVSKKSKHE EEEWTDDDLV ESL.

Storage

Can be stored at +4°C short term (1-2 weeks). For long term storage, aliquot and store at -20°C or -70°C. Avoid repeated freezing and thawing cycles.

GENE INFORMATION

Gene Name

CCNH cyclin H [Homo sapiens]

Synonyms

CCNH; cyclin H; CAK; p34; p37; CDK-activating kinase; cyclin-dependent kinase-activating kinase; MO15-associated protein; Cyclin-H

Gene ID

902

mRNA Refseq

NM_001239

Protein Refseq

NP_001230

MIM

601953

UniProt ID

P51946

Chromosome Location

5q13.3-q14

Pathway

Cell Cycle, Mitotic; Nucleotide excision repair; DNA Repair; Gene Expression; HIV

 Tel: 1-631-559-9269 1-516-512-3133

 Email: info@creative-biomart.com  Fax: 1-631-938-8127

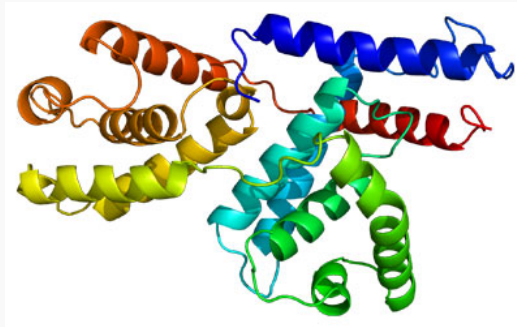
 45-1 Ramsey Road, Shirley, NY 11967, USA

Infection; Transcription; mRNA Processing

Function

contributes_to RNA polymerase II carboxy-terminal domain kinase activity;
contributes_to DNA-dependent ATPase activity; protein binding; contributes_to
protein kinase activity

**PDB rendering based
on 1jkw.**



 Tel: 1-631-559-9269 1-516-512-3133

 Email: info@creative-biomart.com  Fax: 1-631-938-8127

 45-1 Ramsey Road, Shirley, NY 11967, USA