

Recombinant Human CCNI Protein, GST-Tagged

Cat. No. CCNI-0674H Lot. No. (See product label)

SPECIFICATION

Product Overview Human CCNI full-length ORF (AAH00420, 1 a.a. - 377 a.a.) recombinant protein with GST-tag at N-terminal.

Species Human

Source Wheat Germ

Description The protein encoded by this gene belongs to the highly conserved cyclin family, whose members are characterized by a dramatic periodicity in protein abundance through the cell cycle. Cyclins function as regulators of CDK kinases. Different cyclins exhibit distinct expression and degradation patterns which contribute to the temporal coordination of each mitotic event. This cyclin shows the highest similarity with cyclin G. The transcript of this gene was found to be expressed constantly during cell cycle progression. [provided by RefSeq, Jan 2017]

Molecular Mass 67.21 kDa

AA Sequence

```

MKFPGPLENQRLSFLLEKAITREAQMWKVNVRKMPSNQNVSPSQRDEVIQWLAKLK
YQFNLYPETFALASSLLDRFLATVKAHPKYLSCIAISCFFLAAKTVEEDERIPVLKVLAR
DSFCGCSSEILRMERIILDKLNWDLHTATPLDFLHIFHAIHAVSTRPQLLFSLPKLSPS
QHLAVLTKQLLHCMACNQLLQFRGSM LALAMVSLEMEKLIPDWLSLTIELLQKAQMD
SSQLIHCRELVAHHLSTLQSSLPLNSVYVYRPLKHTLVTCDKGVFRLHPSSVPGPDF
SKDNSKPEVPVRGTAAFYHHLPAASGCKQTSTKRKVEEMEVD DFDYDGIKRLYNEDN
VSENVGSVCGTDLSRQEGHASPCPPLQPVSVM
    
```

 Tel: 1-631-559-9269 1-516-512-3133

 Email: info@creative-biomart.com  Fax: 1-631-938-8127

 45-1 Ramsey Road, Shirley, NY 11967, USA

Applications	Enzyme-linked Immunoabsorbent Assay Western Blot (Recombinant protein) Antibody Production Protein Array
Storage	Store at -80 centigrade. Aliquot to avoid repeated freezing and thawing.
Storage Buffer	50 mM Tris-HCl, 10 mM reduced Glutathione, pH=8.0 in the elution buffer.

GENE INFORMATION

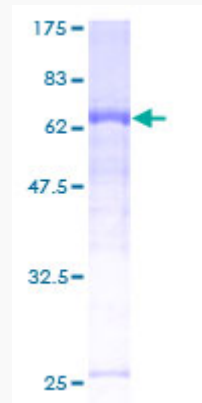
Gene Name	CCNI cyclin I [Homo sapiens]
Official Symbol	CCNI
Synonyms	CCNI; cyclin I; cyclin-I; cyclin ITI; CYI; CYC1;
Gene ID	10983
mRNA Refseq	NM_006835
Protein Refseq	NP_006826
UniProt ID	Q14094

 Tel: 1-631-559-9269 1-516-512-3133

 Email: info@creative-biomart.com  Fax: 1-631-938-8127

 45-1 Ramsey Road, Shirley, NY 11967, USA

**Quality Control
Testing**



12.5% SDS-PAGE Stained with Coomassie Blue.

 Tel: 1-631-559-9269 1-516-512-3133

 Email: info@creative-biomart.com  Fax: 1-631-938-8127

 45-1 Ramsey Road, Shirley, NY 11967, USA