

Recombinant Human CCNI Protein, MYC/DDK-tagged, C13 and N15-labeled

Cat. No. CCNI-419H **Lot. No.** (See product label)

SPECIFICATION

Product Overview

CCNI MS Standard C13 and N15-labeled recombinant protein (NP_006826) with a C-terminal MYC/DDK tag, was expressed in HEK293 cells.

Species

Human

Source

HEK293

Description

The protein encoded by this gene belongs to the highly conserved cyclin family, whose members are characterized by a dramatic periodicity in protein abundance through the cell cycle. Cyclins function as regulators of CDK kinases. Different cyclins exhibit distinct expression and degradation patterns which contribute to the temporal coordination of each mitotic event. This cyclin shows the highest similarity with cyclin G. The transcript of this gene was found to be expressed constantly during cell cycle progression. [provided by RefSeq, Jan 2017]

Molecular Mass

42.6 kDa

AA Sequence

MKFPGPLENQRLSFLLEKAITREAQMWKVNVKMPNSQNVSPSQRDEVIQWLAKLK
YQFNLYPETFALASSLLDRFLATVKAHPKYLSCIAISCFFLAAKTVEEDERIPVLKVLAR
DSFCGCSSEILRMERIIDKLNWDLHTATPLDFLHIFHAIIVSTRPQLLFSLPKLSPS
QHLAVLTKQLLHCMACNQLLQFRGSMMLALAMVSLEMEKLIPDWLSLTIELLQKAQMD
SSQLIHCRELVAHHLSTLQSSLPLNSVYVYRPLKHTLVTCDKGVFRLHPSSVPGPDF
SKDNSKPEVPVRGTAIFYHHLPAASGCKQTSTKRKVEEMEVDYDFYDGIKRLYNEDN

 Tel: 1-631-559-9269 1-516-512-3133

 Email: info@creative-biomart.com  Fax: 1-631-938-8127

 45-1 Ramsey Road, Shirley, NY 11967, USA

VSENVGSVCGTDLRSRQEGHASPCPLQPVSVMTRTRPLEQKLISEEDLAANDILDYK
DDDDKV

Purity > 80% as determined by SDS-PAGE and Coomassie blue staining

Stability Stable for 3 months from receipt of products under proper storage and handling conditions.

Storage Store at -80 centigrade. Avoid repeated freeze-thaw cycles.

Concentration 50 µg/mL as determined by BCA

Storage Buffer 100 mM glycine, 25 mM Tris-HCl, pH 7.3.

GENE INFORMATION

Gene Name CCNI cyclin I [Homo sapiens (human)]

Official Symbol CCNI

Synonyms CCNI; cyclin I; cyclin-I; cyclin ITI; CYI; CYC1;

Gene ID 10983

mRNA Refseq NM_006835

Protein Refseq NP_006826

MIM 618783

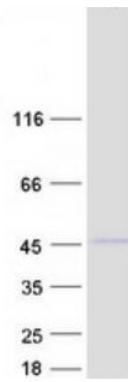
UniProt ID Q14094

 Tel: 1-631-559-9269 1-516-512-3133

 Email: info@creative-biomart.com  Fax: 1-631-938-8127

 45-1 Ramsey Road, Shirley, NY 11967, USA

SDS-PAGE



 Tel: 1-631-559-9269 1-516-512-3133

 Email: info@creative-biomart.com  Fax: 1-631-938-8127

 45-1 Ramsey Road, Shirley, NY 11967, USA