

Recombinant Full Length Human CCNY Protein, C-Flag-tagged

Cat. No. CCNY-123HFL Lot. No. (See product label)

SPECIFICATION

Product Overview	Recombinant Full Length Human CCNY Protein, fused to Flag-tag at C-terminus, was expressed in Mammalian cells.
Species	Human
Source	Mammalian Cells
Description	Cyclins, such as CCNY, control cell division cycles and regulate cyclin-dependent kinases.
Form	25 mM Tris HCl, pH 7.3, 100 mM glycine, 10% glycerol.
Molecular Mass	39.2 kDa
AA Sequence	MGNTTSCCVSSSPKLRRNAHSRLESYRPDSDLSDRETDGCNLQHISDRENIDDLNME FNPSDHPRASTIFL SKSQTDVREKRKSLFINHHPPGQIARKYSSCSTIFLDDSTVSQP NLKYTIKCVALAIYYHIKNRDPDGRM LLDIFDENLHPLSKSEVPPDYDKHNPEQKQIY RFVRTLFSAAQLTAECAIVTLVYLERLLTYAEIDICPA NWKRIVLGAILLASKVWDDQA VWNVDYQCILKDITVEDMNELERQFLELLQFNINVPSSVYAKYYFDLRS LAEANNLSFPLEPLSRERAHKLEAISRLCEDKYKDLRRSARKRSASADNLTLPWSP AISSGPTRTRRLEQKLISEEDLAANDILDYKDDDDKV
Purity	> 80% as determined by SDS-PAGE and Coomassie blue staining.
Stability	Stable for 12 months from the date of receipt of the product under proper storage and

Tel: 1-631-559-9269 1-516-512-3133

Email: info@creative-biomart.com Fax: 1-631-938-8127

45-1 Ramsey Road, Shirley, NY 11967, USA

handling conditions. Avoid repeated freeze-thaw cycles.

Storage Store at -80 centigrade.

Concentration >50 ug/mL as determined by microplate BCA method.

Preparation Recombinant protein was captured through anti-DDK affinity column followed by conventional chromatography steps.

Full Length Full L.

GENE INFORMATION

Gene Name CCNY cyclin Y [Homo sapiens (human)]

Official Symbol CCNY

Synonyms CCNX; CFP1; CBCP1; C10orf9

Gene ID 219771

mRNA Refseq NM_145012.6

Protein Refseq NP_659449.3

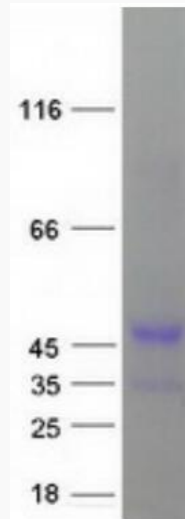
MIM 612786

UniProt ID Q8ND76

 Tel: 1-631-559-9269 1-516-512-3133

 Email: info@creative-biomart.com  Fax: 1-631-938-8127

 45-1 Ramsey Road, Shirley, NY 11967, USA



Coomassie blue staining of purified CCNY protein.

 Tel: 1-631-559-9269 1-516-512-3133

 Email: info@creative-biomart.com  Fax: 1-631-938-8127

 45-1 Ramsey Road, Shirley, NY 11967, USA