

# Recombinant Human CCR1 Full Length Transmembrane protein, Flag-Tagged(Nanodisc)

Cat. No. CCR1-0294H Lot. No. (See product label)

## SPECIFICATION

|                         |   |
|-------------------------|---|
| <b>Product Overview</b> | Recombinant Human CCR1 protein(P32246), fused with Flag Tag, was expressed in HEK293.   |
| <b>Species</b>          | Human   |
| <b>Source</b>           | HEK293  |
| <b>Form</b>             | Lyophilized from nanodisc solubilization buffer (20 mM Tris-HCl, 150 mM NaCl, pH 8.0). Normally 5% – 8% trehalose is added as protectants before lyophilization.  |
| <b>Bio-activity</b>     | Serial diluted anti-Flag monoclonal antibody solutions were added, washed, and incubated with secondary antibody before Elisa reading. From above data, the EC50 for anti-Flag monoclonal antibody binding with CCR1-Nanodisc is 3.825ng/ml.        |
| <b>Molecular Mass</b>   | The human full length CCR1 protein has a MW of 41.2 kDa   |
| <b>Storage</b>          | Store at -20°C to -80°C for 24 months in lyophilized form. After reconstitution, if not intended for use within a month, aliquot and store at -80°C (Avoid repeated freezing and thawing). Lyophilized proteins are shipped at ambient temperature. |
| <b>Reconstitution</b>   | It is recommended that sterile water be added to the vial to prepare a stock solution of 0.2 ug/ul. Centrifuge the vial at 4°C before opening to recover the entire contents.   |

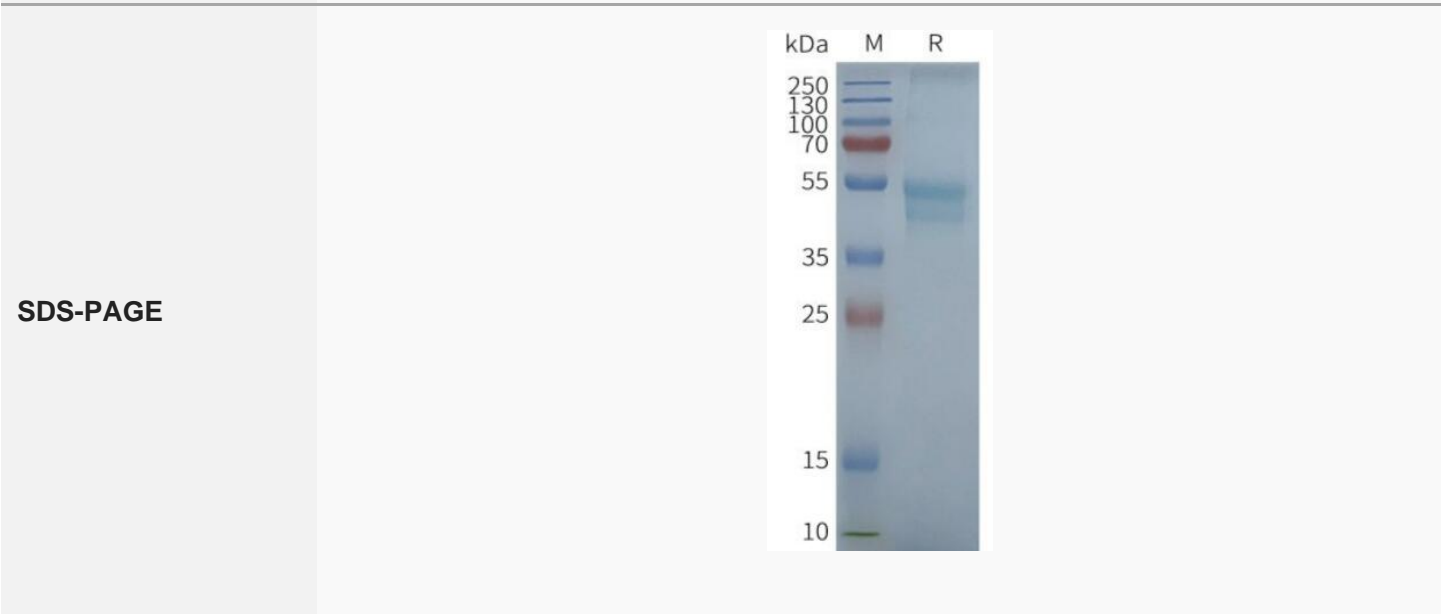
## GENE INFORMATION

 Tel: 1-631-559-9269 1-516-512-3133

 Email: [info@creative-biomart.com](mailto:info@creative-biomart.com)  Fax: 1-631-938-8127

 45-1 Ramsey Road, Shirley, NY 11967, USA

|                        |   |
|------------------------|---|
| <b>Gene Name</b>       | CCR1 chemokine (C-C motif) receptor 1 [ Homo sapiens ]  |
| <b>Official Symbol</b> | CCR1  |
| <b>Synonyms</b>        | CCR1; chemokine (C-C motif) receptor 1; CMKBR1; SCYAR1; C-C chemokine receptor type 1; CD191; CKR 1; MIP1aR; CCR-1; CC-CKR-1; RANTES-R; C-C CKR-1; MIP-1alpha-R; LD78 receptor; RANTES receptor; macrophage inflammatory protein 1-alpha receptor; CKR1; CKR-1; HM145; CMKBR1; SCYAR1 |
| <b>Gene ID</b>         | 1230  |
| <b>mRNA Refseq</b>     | NM_001295   |
| <b>Protein Refseq</b>  | NP_001286   |
| <b>MIM</b>             | 601159  |
| <b>UniProt ID</b>      | P32246  |

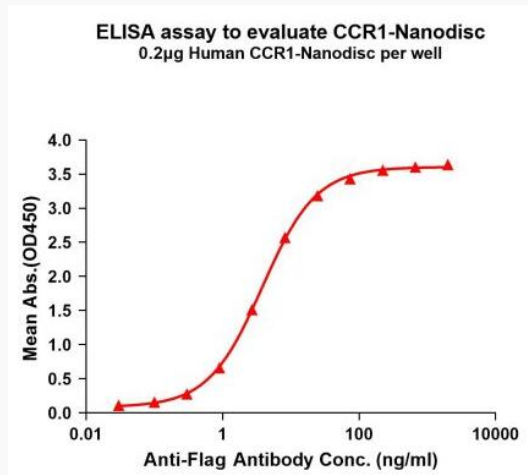


Tel: 1-631-559-9269 1-516-512-3133

Email: [info@creative-biomart.com](mailto:info@creative-biomart.com) Fax: 1-631-938-8127

45-1 Ramsey Road, Shirley, NY 11967, USA

Elisa Assay



 Tel: 1-631-559-9269 1-516-512-3133

 Email: [info@creative-biomart.com](mailto:info@creative-biomart.com)  Fax: 1-631-938-8127

 45-1 Ramsey Road, Shirley, NY 11967, USA