

## Recombinant Human CCR1 protein, His-SUMO-tagged

Cat. No. CCR1-6213H Lot. No. (See product label)

### SPECIFICATION

<b>Product Overview</b>	Recombinant Human CCR1 protein(P32246)(306-355aa), fused with N-terminal His-SUMO tag, was expressed in E.coli.
<b>Species</b>	Human
<b>Source</b>	E.coli
<b>ProteinLength</b>	306-355aa
<b>Form</b>	If the delivery form is liquid, the default storage buffer is Tris/PBS-based buffer, 5%-50% glycerol. If the delivery form is lyophilized powder, the buffer before lyophilization is Tris/PBS-based buffer, 6% Trehalose, pH 8.0.
<b>Molecular Mass</b>	18.9 kDa
<b>Purity</b>	Greater than 85% as determined by SDS-PAGE.
<b>Storage</b>	Store at -20°C/-80°C upon receipt, aliquoting is necessary for mutiple use. Avoid repeated freeze-thaw cycles.
<b>Reconstitution</b>	We recommend that this vial be briefly centrifuged prior to opening to bring the contents to the bottom. Please reconstitute protein in deionized sterile water to a concentration of 0.1-1.0 mg/mL. We recommend to add 5-50% of glycerol (final concentration) and aliquot for long-term storage at -20°C/-80°C.

 Tel: 1-631-559-9269 1-516-512-3133

 Email: [info@creative-biomart.com](mailto:info@creative-biomart.com)  Fax: 1-631-938-8127

 45-1 Ramsey Road, Shirley, NY 11967, USA

**AA Sequence**                      ERFKYLRLQFLHRRVAVHLVKWLPFLSVDRLERVSSTSPSTGEHELSAGF

## GENE INFORMATION

**Gene Name**                      CCR1 chemokine (C-C motif) receptor 1 [ Homo sapiens ]

**Official Symbol**                CCR1

**Synonyms**                        CCR1; chemokine (C-C motif) receptor 1; CMKBR1, SCYAR1; C-C chemokine receptor type 1; CD191; CKR 1; MIP1aR; CCR-1; CC-CKR-1; RANTES-R; C-C CKR-1; MIP-1alpha-R; LD78 receptor; RANTES receptor; macrophage inflammatory protein 1-alpha receptor; CKR1; CKR-1; HM145; CMKBR1; SCYAR1;

**Gene ID**                            1230

**mRNA Refseq**                    NM\_001295

**Protein Refseq**                  NP\_001286

**MIM**                                601159

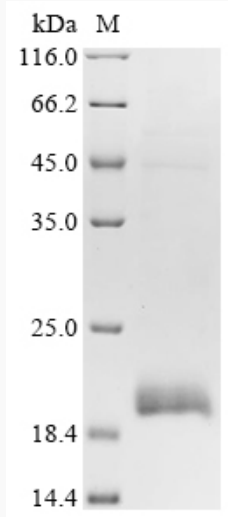
**UniProt ID**                        P32246

 Tel: 1-631-559-9269    1-516-512-3133

 Email: [info@creative-biomart.com](mailto:info@creative-biomart.com)     Fax: 1-631-938-8127

 45-1 Ramsey Road, Shirley, NY 11967, USA

**SDS-PAGE**



 Tel: 1-631-559-9269 1-516-512-3133

 Email: [info@creative-biomart.com](mailto:info@creative-biomart.com)  Fax: 1-631-938-8127

 45-1 Ramsey Road, Shirley, NY 11967, USA