

Recombinant Human CCR10 Protein, GST-Tagged

Cat. No. CCR10-0688H Lot. No. (See product label)

SPECIFICATION

Product Overview	Human CCR10 full-length ORF (AAH98132.1, 1 a.a. - 362 a.a.) recombinant protein with GST-tag at N-terminal.
Species	Human
Source	Wheat Germ
Description	Chemokines are a group of small (approximately 8 to 14 kD), mostly basic, structurally related molecules that regulate cell trafficking of various types of leukocytes through interactions with a subset of 7-transmembrane, G protein-coupled receptors. Chemokines also play fundamental roles in the development, homeostasis, and function of the immune system, and they have effects on cells of the central nervous system as well as on endothelial cells involved in angiogenesis or angiostasis. Chemokines are divided into 2 major subfamilies, CXC and CC, based on the arrangement of the first 2 of the 4 conserved cysteine residues; the 2 cysteines are separated by a single amino acid in CXC chemokines and are adjacent in CC chemokines. CCR10 is the receptor for CCL27 (SCYA27; MIM 604833); CCR10-CCL27 interactions are involved in T cell-mediated skin inflammation (Homey et al., 2002 [PubMed 11821900]).[supplied by OMIM, Mar 2008]
Molecular Mass	64.8 kDa
AA Sequence	MGTEATEQVSWGHHYSGDEEDAYSAPLPELCYKADVQAFSRAFQPSVSLTVAALG LAGNGLVLATHLAARRAARSPTSAHLLQLALADLLLALTLPFAAAGALQGWSLGSAT

 Tel: 1-631-559-9269 1-516-512-3133

 Email: info@creative-biomart.com  Fax: 1-631-938-8127

 45-1 Ramsey Road, Shirley, NY 11967, USA

CRTISGLYSASFHAGFLFLACISADRYVAIARALPAGPRPSTPGRAHLVSVIVWLLSLL
 LALPALLFSQDGQREGQRRCLIFPEGLTQTVKGASAVAQVALGFALPLGVMVACY
 ALLGRTLLAARGPERRRALRVVVALVAAFVVLQLPYSLALLLDTADLLAARERSCPAS
 KRKDVALLVTSGLALARCGLNPNVLYAFLGLRFRQDLRLLRGGSCPSGPQPRRGCP
 RRPRLSSCSAPTETHSLSDWN

Applications
 Enzyme-linked Immunoabsorbent Assay
 Western Blot (Recombinant protein)
 Antibody Production
 Protein Array

Storage Store at -80 centigrade. Aliquot to avoid repeated freezing and thawing.

Storage Buffer 50 mM Tris-HCl, 10 mM reduced Glutathione, pH=8.0 in the elution buffer.

GENE INFORMATION

Gene Name [CCR10 chemokine \(C-C motif\) receptor 10 \[Homo sapiens \]](#)

Official Symbol [CCR10](#)

Synonyms CCR10; chemokine (C-C motif) receptor 10; G protein coupled receptor 2, GPR2; C-C chemokine receptor type 10; CCR-10; CC-CKR-10; C-C CKR-10; CC chemokine receptor 10; G protein-coupled receptor 2; G-protein coupled receptor 2; GPR2;

Gene ID [2826](#)

mRNA Refseq [NM_016602](#)

Protein Refseq [NP_057686](#)

 Tel: 1-631-559-9269 1-516-512-3133

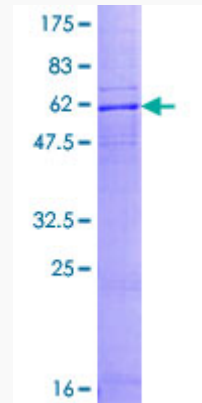
 Email: info@creative-biomart.com  Fax: 1-631-938-8127

 45-1 Ramsey Road, Shirley, NY 11967, USA

MIM 600240

UniProt ID P46092

**Quality Control
Testing**



12.5% SDS-PAGE Stained with Coomassie Blue.

 Tel: 1-631-559-9269 1-516-512-3133

 Email: info@creative-biomart.com  Fax: 1-631-938-8127

 45-1 Ramsey Road, Shirley, NY 11967, USA