

Recombinant Human CCR10 Protein, His-tagged

Cat. No. CCR10-17H Lot. No. (See product label)

SPECIFICATION

Product Overview Recombinant Human CCR10 Protein(NP_057686)(Met1~Ser78), fused to N-terminal His tag, was expressed in E.coli.

Species Human

Source E.coli

ProteinLength Met1~Ser78

Form 20mM Tris, 150mM NaCl, pH8.0, containing 1mM EDTA, 1mM DTT, 0.01% SKL, 5% Trehalose and Proclin300.

Molecular Mass 15kDa as determined by SDS-PAGE reducing conditions.

Endotoxin <1.0EU per 1g (determined by the LAL method)

Purity > 90%

Applications Positive Control; Immunogen; SDS-PAGE; WB.

Stability The thermal stability is described by the loss rate. The loss rate was determined by accelerated thermal degradation test, that is, incubate the protein at 37°C for 48h, and no obvious degradation and precipitation were observed. The loss rate is less than 5% within the expiration date under appropriate storage condition.

 Tel: 1-631-559-9269 1-516-512-3133

 Email: info@creative-biomart.com  Fax: 1-631-938-8127

 45-1 Ramsey Road, Shirley, NY 11967, USA

Storage	Avoid repeated freeze/thaw cycles. Store at 2-8°C for one month. Aliquot and store at -80°C for 12 months.
Concentration	200g/mL
Reconstitution	Reconstitute in 20mM Tris, 150mM NaCl (pH8.0) to a concentration of 0.1-1.0 mg/mL. Do not vortex.

GENE INFORMATION

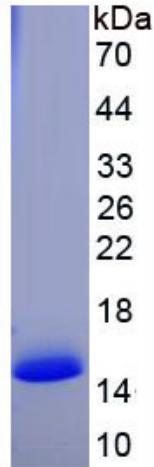
Gene Name	CCR10 chemokine (C-C motif) receptor 10 [Homo sapiens]
Official Symbol	CCR10
Synonyms	CCR10; chemokine (C-C motif) receptor 10; G protein coupled receptor 2 , GPR2; C-C chemokine receptor type 10; CCR-10; CC-CKR-10; C-C CKR-10; CC chemokine receptor 10; G protein-coupled receptor 2; G-protein coupled receptor 2; GPR2;
Gene ID	2826
mRNA Refseq	NM_016602
Protein Refseq	NP_057686
MIM	600240
UniProt ID	P46092

 Tel: 1-631-559-9269 1-516-512-3133

 Email: info@creative-biomart.com  Fax: 1-631-938-8127

 45-1 Ramsey Road, Shirley, NY 11967, USA

SDS-PAGE



 Tel: 1-631-559-9269 1-516-512-3133

 Email: info@creative-biomart.com  Fax: 1-631-938-8127

 45-1 Ramsey Road, Shirley, NY 11967, USA