

Recombinant Human CCR2 Protein, GST-Tagged

Cat. No. CCR2-0689H Lot. No. (See product label)

SPECIFICATION

Product Overview	Human CCR2 partial ORF (NP_000639, 1 a.a. - 42 a.a.) recombinant protein with GST-tag at N-terminal.
Species	Human
Source	Wheat Germ
Description	<p>This gene encodes two isoforms of a receptor for monocyte chemoattractant protein-1, a chemokine which specifically mediates monocyte chemotaxis. Monocyte chemoattractant protein-1 is involved in monocyte infiltration in inflammatory diseases such as rheumatoid arthritis as well as in the inflammatory response against tumors. The receptors encoded by this gene mediate agonist-dependent calcium mobilization and inhibition of adenylyl cyclase. This gene is located in the chemokine receptor gene cluster region. Two alternatively spliced transcript variants are expressed by the gene. [provided by RefSeq, Mar 2009]</p>
Molecular Mass	30.36 kDa
AA Sequence	MLSTSRSRFIRNTNESGEEVTTFFDYDYGAPCHKFDVKQIGA
Applications	Enzyme-linked Immunoabsorbent Assay Western Blot (Recombinant protein) Antibody Production Protein Array

 Tel: 1-631-559-9269 1-516-512-3133

 Email: info@creative-biomart.com  Fax: 1-631-938-8127

 45-1 Ramsey Road, Shirley, NY 11967, USA

Storage Store at -80 centigrade. Aliquot to avoid repeated freezing and thawing.

Storage Buffer 50 mM Tris-HCl, 10 mM reduced Glutathione, pH=8.0 in the elution buffer.

GENE INFORMATION

Gene Name CCR2 chemokine (C-C motif) receptor 2 [Homo sapiens]

Official Symbol CCR2

Synonyms CCR2; chemokine (C-C motif) receptor 2; CMKBR2; CC CKR 2; CD192; CKR2; FLJ78302; MCP 1 R; CCR2A; CCR2B; CKR2A; CKR2B; MCP-1-R; CC-CKR-2;

Gene ID 729230

mRNA Refseq NM_001123041

Protein Refseq NP_001116513

MIM 601267

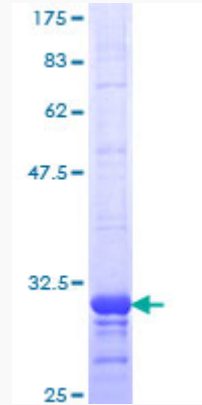
UniProt ID P41597

 Tel: 1-631-559-9269 1-516-512-3133

 Email: info@creative-biomart.com  Fax: 1-631-938-8127

 45-1 Ramsey Road, Shirley, NY 11967, USA

**Quality Control
Testing**



12.5% SDS-PAGE Stained with Coomassie Blue.

 Tel: 1-631-559-9269 1-516-512-3133

 Email: info@creative-biomart.com  Fax: 1-631-938-8127

 45-1 Ramsey Road, Shirley, NY 11967, USA