

Active Recombinant Human CCR2 protein

Cat. No. CCR2-15H Lot. No. (See product label)

SPECIFICATION

| | |
|-------------------------|--|
| Product Overview | Recombinant Human CCR2(P41597-2) is expressed from HEK293. It contains Met1-Ala374. |
| Species | Human |
| Source | HEK293 |
| ProteinLength | Met1-Ala374 |
| Form | Supplied as 0.22µm filtered solution in PBS (pH 7.4). |
| Bio-activity | Immobilized Human CCR2b VLP at 5µg/ml (100µl/Well) on the plate. Dose response curve for Anti-CCR2b Antibody, hFc Tag with the EC50 of 12.0ng/ml determined by ELISA. |
| Molecular Mass | The protein has a predicted MW of 42.9kDa. |
| Endotoxin | Less than 1EU per µg by the LAL method. |
| Purity | > 95% as determined by HPLC |
| Storage | Valid for 12 months from date of receipt when stored at -80°C. Recommend to aliquot the protein into smaller quantities for optimal storage. Please do not repeated freeze-thaw cycles. |

 Tel: 1-631-559-9269 1-516-512-3133

 Email: info@creative-biomart.com  Fax: 1-631-938-8127

 45-1 Ramsey Road, Shirley, NY 11967, USA

Reconstitution It is recommended that sterile water be added to the vial to prepare a stock solution of 0.2 ug/ul. Centrifuge the vial at 4°C before opening to recover the entire contents.

GENE INFORMATION

Gene Name CCR2 chemokine (C-C motif) receptor 2 [Homo sapiens]

Official Symbol CCR2

Synonyms CCR2; chemokine (C-C motif) receptor 2; CMKBR2; CC CKR 2; CD192; CKR2; FLJ78302; MCP 1 R; CCR2A; CCR2B; CKR2A; CKR2B; MCP-1-R; CC-CKR-2

Gene ID 729230

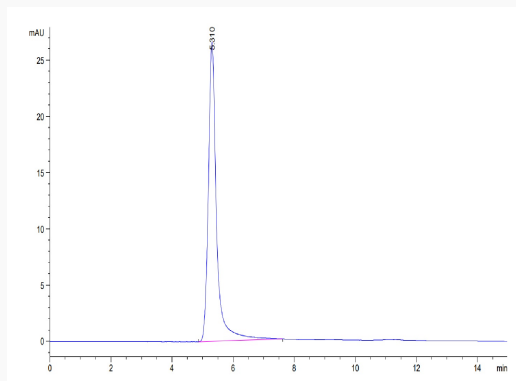
mRNA Refseq NM_001123041

Protein Refseq NP_001116513

MIM 601267

UniProt ID P41597

SEC-HPLC

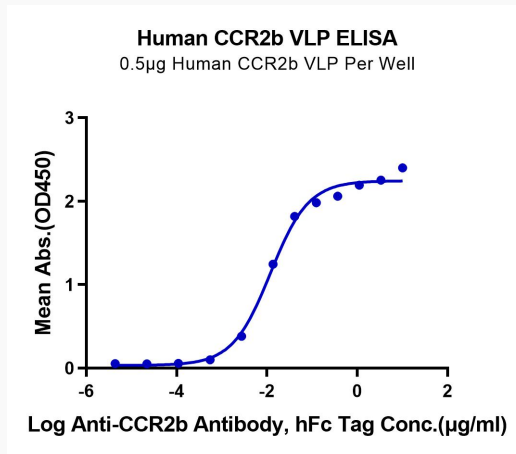


 Tel: 1-631-559-9269 1-516-512-3133

 Email: info@creative-biomart.com  Fax: 1-631-938-8127

 45-1 Ramsey Road, Shirley, NY 11967, USA

ELISA Data



 Tel: 1-631-559-9269 1-516-512-3133

 Email: info@creative-biomart.com  Fax: 1-631-938-8127

 45-1 Ramsey Road, Shirley, NY 11967, USA