

Active Recombinant Human CCR2 protein, Biotinylated

Cat. No. CCR2-15HB Lot. No. (See product label)

SPECIFICATION

Product Overview	Biotinylated Recombinant Human CCR2 protein(P41597-2) is expressed from HEK293. It contains Met1-Ala374.
Species	Human
Source	HEK293
ProteinLength	Met1-Ala374
Form	Supplied as 0.22µm filtered solution in PBS (pH 7.4).
Bio-activity	Immobilized Biotinylated Human CCR2b VLP on streptavidin (5µg/ml) precoated plate. Dose response curve for Anti-CCR2b Antibody, hFc Tag with the EC50 of 36.5ng/ml determined by ELISA.
Molecular Mass	The protein has a predicted MW of 42.9kDa.
Endotoxin	Less than 1EU per µg by the LAL method.
Purity	> 95% as determined by HPLC
Storage	Valid for 12 months from date of receipt when stored at -80°C. Recommend to aliquot the protein into smaller quantities for optimal storage. Please do not repeated freeze-thaw cycles.

 Tel: 1-631-559-9269 1-516-512-3133

 Email: info@creative-biomart.com  Fax: 1-631-938-8127

 45-1 Ramsey Road, Shirley, NY 11967, USA

Reconstitution	It is recommended that sterile water be added to the vial to prepare a stock solution of 0.2 ug/ul. Centrifuge the vial at 4°C before opening to recover the entire contents.
-----------------------	---

Conjugation	Biotin
--------------------	--------

GENE INFORMATION

Gene Name	CCR2 chemokine (C-C motif) receptor 2 [Homo sapiens]
------------------	--

Official Symbol	CCR2
------------------------	------

Synonyms	CCR2; chemokine (C-C motif) receptor 2; CMKBR2; CC CKR 2; CD192; CKR2; FLJ78302; MCP 1 R; CCR2A; CCR2B; CKR2A; CKR2B; MCP-1-R; CC-CKR-2
-----------------	---

Gene ID	729230
----------------	--------

mRNA Refseq	NM_001123041
--------------------	--------------

Protein Refseq	NP_001116513
-----------------------	--------------

MIM	601267
------------	--------

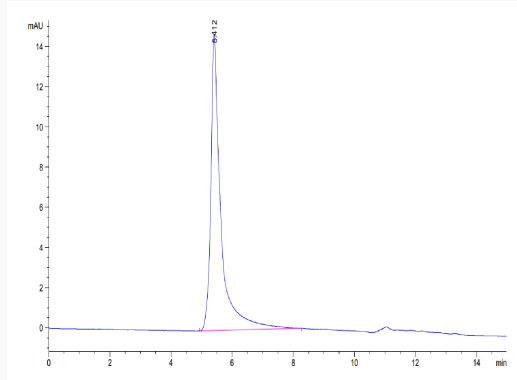
UniProt ID	P41597
-------------------	--------

 Tel: 1-631-559-9269 1-516-512-3133

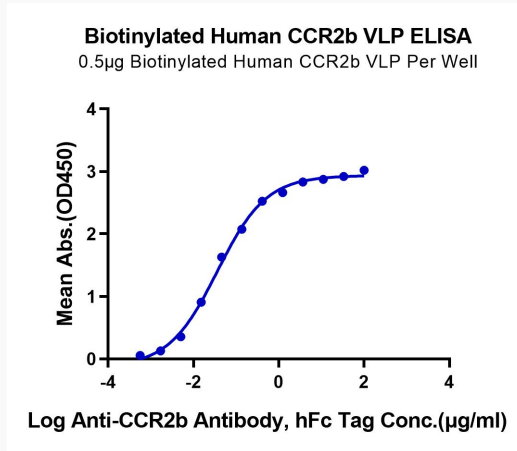
 Email: info@creative-biomart.com  Fax: 1-631-938-8127

 45-1 Ramsey Road, Shirley, NY 11967, USA

SEC-HPLC



ELISA Data



 Tel: 1-631-559-9269 1-516-512-3133

 Email: info@creative-biomart.com  Fax: 1-631-938-8127

 45-1 Ramsey Road, Shirley, NY 11967, USA