

Recombinant Mouse chemokine (C-C motif) receptor 2 Protein, His-tagged

Cat. No. CCR2-3014M **Lot. No.** (See product label)

SPECIFICATION

Product Overview	Recombinant Mouse CCR2 Protein with N-10xHis tag was expressed in E. coli.
Species	Mouse
Source	E.coli
Description	Enables C-C chemokine binding activity and C-C chemokine receptor activity. Involved in several processes, including leukocyte migration; positive regulation of cell migration; and regulation of cytokine production. Acts upstream of or within several processes, including cellular defense response; monocyte chemotaxis; and neutrophil clearance. Located in external side of plasma membrane. Is expressed in several structures, including alimentary system; brain; genitourinary system; hemolymphoid system gland; and liver and biliary system. Used to study Coronavirus infectious disease and age related macular degeneration. Human ortholog(s) of this gene implicated in several diseases, including Kawasaki disease; aggressive periodontitis; coronary artery disease (multiple); glucose metabolism disease (multiple); and uveitis (multiple). Orthologous to human CCR2 (C-C motif chemokine receptor 2).
Tag	N-10xHis
Molecular Mass	48.8 kDa
AA Sequence	MEDNNMLPQFIHGILSTSHSLFTRSIQELDEGATTPYDYDDGEPCHKTSVKQIGAWIL

 Tel: 1-631-559-9269 1-516-512-3133

 Email: info@creative-biomart.com  Fax: 1-631-938-8127

 45-1 Ramsey Road, Shirley, NY 11967, USA

PPLYSLVFIFGFVGNMLVIIIIGCKKLKSMTDIYLLNLAISDLLFLLTLPFWAHYAANEW
 VFGNIMCKVFTGLYHIGYFGGIFFIILLTIDRYLAIVHAVFALKARTVTFGVITSVVTWVV
 AVFASLPGIIFTKSKQDDHHYTCGPYFTQLWKNFQTIMRNILSLILPLLVMVICYSGILH
 TLFRCRNEKKRHRAVRLIFAIMIVYFLFWTPYNIVLFLTTFFQESLGMSNCVIDKHLDDQA
 MQVTETLGMTHCCINPVIYAFVGEKFRRYLSIFFRKHIAKRLCKQCPVFYRETADRVS
 STFTPSTGEQEVSVGL

Purity > 90 % by SDS-PAGE

Storage Store it at -20 to -80 centigrade. It is recommended that the protein be aliquoted for optimal storage. Avoid repeated freeze-thaw cycles.

Concentration 0.4 mg/mL

Storage Buffer 20 mM Tris-HCl, 0.15 M NaCl, 0.05 % FOS12, pH 8.0, 20 % glycerol

GENE INFORMATION

Gene Name *Ccr2* chemokine (C-C motif) receptor 2 [*Mus musculus* (house mouse)]

Official Symbol *Ccr2*

Synonyms CCR2; chemokine (C-C motif) receptor 2; C-C chemokine receptor type 2; CCR-2; C-C CKR-2; MIP-1 alphaR; MCP-1 receptor; JE/FIC receptor; chemokine (C-C) receptor 2; chemoattractant protein-1 receptor; C-C CHEMOKINE RECEPTOR TYPE 2 (C-C CKR-2) (CC-CKR-2) (CCR-2) (CCR2) (JE/FIC RECEPTOR) (MCP-1 RECEPTOR); Ckr2; Ccr2a; Ccr2b; Ckr2a; Ckr2b; mJe-r; Cmkbr2; Cc-ckr-2

Gene ID 12772

mRNA Refseq NM_009915

 Tel: 1-631-559-9269 1-516-512-3133

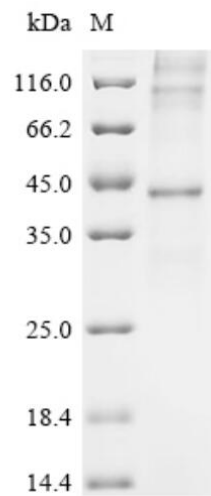
 Email: info@creative-biomart.com  Fax: 1-631-938-8127

 45-1 Ramsey Road, Shirley, NY 11967, USA

Protein Refseq NP_034045

UniProt ID P51683

**SDS-PAGE analysis
of purified protein**



Observed band size: 44&110&130 kDa. It is speculated that the protein forms a multimer structure.

M: Protein ladder

 Tel: 1-631-559-9269 1-516-512-3133

 Email: info@creative-biomart.com  Fax: 1-631-938-8127

 45-1 Ramsey Road, Shirley, NY 11967, USA