

Active Recombinant Human CCR2 Full Length Transmembrane protein(Nanodisc)

Cat. No. CCR2-3954H Lot. No. (See product label)

SPECIFICATION

Product Overview

Recombinant Human CCR2 Full Length Transmembrane protein(P41597), was expressed in HEK293.

Species

Human

Source

HEK293

Form

Lyophilized from nanodisc solubilization buffer (20 mM Tris-HCl, 150 mM NaCl, pH 8.0). Normally 5% – 8% trehalose is added as protectants before lyophilization. Please see Certificate of Analysis for specific instructions.

Bio-activity

Elisa plates were pre-coated with Flag Tag CCR2-Nanodisc (0.2µg/per well). Serial diluted anti-Flag monoclonal antibody solutions were added, washed, and incubated with secondary antibody before Elisa reading. From above data, the EC50 for anti-Flag monoclonal antibody binding with CCR2-Nanodisc is 7.62ng/ml.

Molecular Mass

The human full length CCR2 protein has a MW of 41.9 kDa.

Storage

Store at -20°C to -80°C for 12 months in lyophilized form. After reconstitution, if not intended for use within a month, aliquot and store at -80°C (Avoid repeated freezing and thawing). Lyophilized proteins are shipped at ambient temperature.

Reconstitution

It is recommended that sterile water be added to the vial to prepare a stock solution of 0.2 ug/ul. Centrifuge the vial at 4°C before opening to recover the entire contents.

 Tel: 1-631-559-9269 1-516-512-3133

 Email: info@creative-biomart.com  Fax: 1-631-938-8127

 45-1 Ramsey Road, Shirley, NY 11967, USA

Full Length

Full L.

GENE INFORMATION

Gene Name

CCR2 chemokine (C-C motif) receptor 2 [Homo sapiens]

Official Symbol

CCR2

Synonyms

CCR2; chemokine (C-C motif) receptor 2; CMKBR2; CC CKR 2; CD192; CKR2; FLJ78302; MCP 1 R; CCR2A; CCR2B; CKR2A; CKR2B; MCP-1-R; CC-CKR-2;

Gene ID

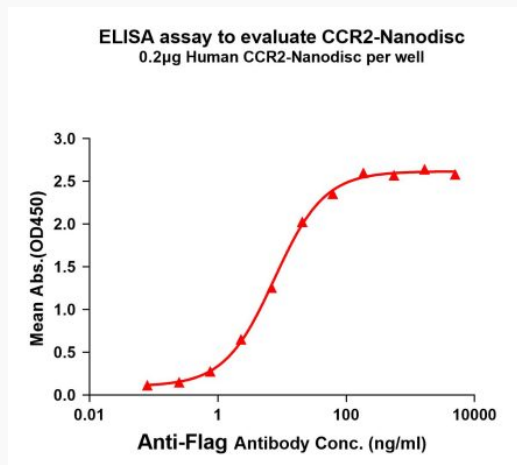
1231

MIM

601267

UniProt ID

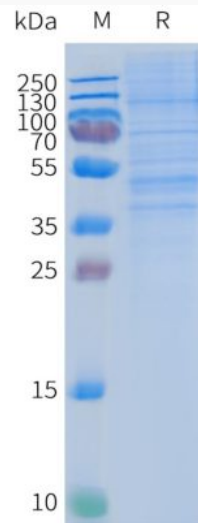
P41597

Activity

 Tel: 1-631-559-9269 1-516-512-3133

 Email: info@creative-biomart.com  Fax: 1-631-938-8127

 45-1 Ramsey Road, Shirley, NY 11967, USA

SDS-PAGE



 Tel: 1-631-559-9269 1-516-512-3133

 Email: info@creative-biomart.com  Fax: 1-631-938-8127

 45-1 Ramsey Road, Shirley, NY 11967, USA