

## Active Recombinant Human CCR2 Full Length Transmembrane protein(VLPs), Biotinylated

Cat. No. CCR2-4393H Lot. No. (See product label)

### SPECIFICATION

<b>Product Overview</b>	Biotinylated Active Recombinant Human CCR2 Full Length Transmembrane protein(VLPs)(P41597-2)(Met1-Leu360) is expressed from HEK293.
<b>Species</b>	Human
<b>Source</b>	HEK293
<b>ProteinLength</b>	Met1-Leu360
<b>Form</b>	Supplied as 0.22µm filtered solution in PBS (pH 7.4).
<b>Bio-activity</b>	Biotinylated Human CCR2b VLP captured on SA Chip can bind Anti-CCR2b Antibody with an affinity constant of 5.24 nM as determined in SPR assay (Biacore T200).
<b>Molecular Mass</b>	The target protein has a predicted MW of 42.9kDa.
<b>Endotoxin</b>	Less than 1EU per µg by the LAL method.
<b>Purity</b>	> 95% as determined by HPLC
<b>Storage</b>	Valid for 12 months from date of receipt when stored at -80°C. Recommend to aliquot the protein into smaller quantities for optimal storage. Please minimize freeze-thaw cycles.

 Tel: 1-631-559-9269 1-516-512-3133

 Email: [info@creative-biomart.com](mailto:info@creative-biomart.com)  Fax: 1-631-938-8127

 45-1 Ramsey Road, Shirley, NY 11967, USA

**Reconstitution** It is recommended that sterile water be added to the vial to prepare a stock solution of 0.2 ug/ul. Centrifuge the vial at 4°C before opening to recover the entire contents.

**Conjugation** Biotin

## GENE INFORMATION

**Gene Name** CCR2 chemokine (C-C motif) receptor 2 [ Homo sapiens ]

**Official Symbol** CCR2

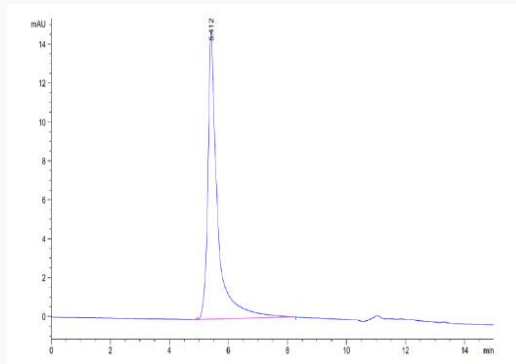
**Synonyms** CCR2; chemokine (C-C motif) receptor 2; CMKBR2; CC CKR 2; CD192; CKR2; FLJ78302; MCP 1 R; CCR2A; CCR2B; CKR2A; CKR2B; MCP-1-R; CC-CKR-2;

**Gene ID** 1231

**MIM** 601267

**UniProt ID** P41597

### SEC-HPLC



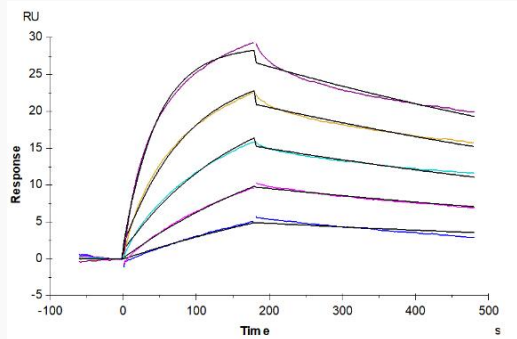
Tel: 1-631-559-9269 1-516-512-3133

Email: [info@creative-biomart.com](mailto:info@creative-biomart.com) Fax: 1-631-938-8127

45-1 Ramsey Road, Shirley, NY 11967, USA



SPR Data



Tel: 1-631-559-9269 1-516-512-3133

Email: [info@creative-biomart.com](mailto:info@creative-biomart.com) Fax: 1-631-938-8127

45-1 Ramsey Road, Shirley, NY 11967, USA