

Recombinant Human CCR5 Full Length Transmembrane protein, His-tagged

Cat. No. CCR5-2356H Lot. No. (See product label)

SPECIFICATION

Product Overview	Recombinant Human CCR5 protein(P51681)(1-352aa), fused to N-terminal His tag, was expressed in E. coli.
Species	Human
Source	E.coli
ProteinLength	1-352aa
Form	If the delivery form is liquid, the default storage buffer is Tris/PBS-based buffer, 5%-50% glycerol. If the delivery form is lyophilized powder, the buffer before lyophilization is Tris/PBS-based buffer, 6% Trehalose, pH 8.0.
Molecular Mass	43.9 kDa
AA Sequence	MDYQVSSPIYDINYYTSEPCQKINVKQIAARLLPPLYSLVFIFGFVGNMLVILILINCKRL KSMTDIYLLNLAISDLFFLLTVPFWAHYAAAQWDFGNTMCQLLTGLYFIGFFSGIFFIIL LTIDRYLAVVHAVFALKARTVTFGVVTSVITWVVAVFASLPGIIFTRSQKEGLHYTCSS HFPYSQYQFWKNFQTLKIVILGLVLP LLVMVICYSGILKTLRLCRNEKKRHRAVRLIFTI MIVYFLFWAPYNIVLLLNTFQEFFGLNNC SSSNR LDQAMQVTETLGMTHCCINPIIYA FVGEKFRNYLLVFFQKHI AKRFCKCCSIFQQEAPERASSVYTRSTGEQEISVGL
Purity	Greater than 85% as determined by SDS-PAGE.

Tel: 1-631-559-9269 1-516-512-3133

Email: info@creative-biomart.com Fax: 1-631-938-8127

45-1 Ramsey Road, Shirley, NY 11967, USA

Storage Store at -20°C/-80°C upon receipt, aliquoting is necessary for mutiple use. Avoid repeated freeze-thaw cycles.

Reconstitution Please reconstitute protein in deionized sterile water to a concentration of 0.1-1.0 mg/mL. We recommend to add 5-50% of glycerol (final concentration) and aliquot for long-term storage at -20°C/-80°C. Our default final concentration of glycerol is 50%.

GENE INFORMATION

Gene Name CCR5 chemokine (C-C motif) receptor 5 (gene/pseudogene) [Homo sapiens]

Official Symbol CCR5

Synonyms CCR5; chemokine (C-C motif) receptor 5 (gene/pseudogene); chemokine (C C motif) receptor 5 , CMKBR5; C-C chemokine receptor type 5; CC CKR 5; CD195; CKR 5; CKR5; IDDM22; chemr13; HIV-1 fusion coreceptor; chemokine receptor CCR5; C-C motif chemokine receptor 5 A159A; CCR-5; CKR-5; CCCKR5; CMKBR5; CC-CKR-5; FLJ78003;

Gene ID 1234

mRNA Refseq NM_000579

Protein Refseq NP_000570

MIM 601373

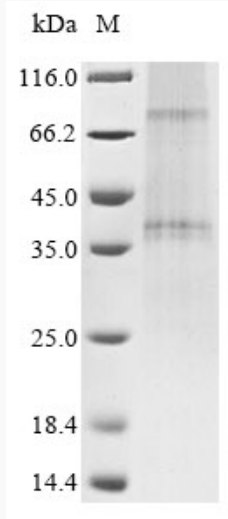
UniProt ID P51681

 Tel: 1-631-559-9269 1-516-512-3133

 Email: info@creative-biomart.com  Fax: 1-631-938-8127

 45-1 Ramsey Road, Shirley, NY 11967, USA

SDS-PAGE



 Tel: 1-631-559-9269 1-516-512-3133

 Email: info@creative-biomart.com  Fax: 1-631-938-8127

 45-1 Ramsey Road, Shirley, NY 11967, USA