

Recombinant Human CCR6 protein, His&Myc-tagged

Cat. No. CCR6-1176H Lot. No. (See product label)

SPECIFICATION

Product Overview	Recombinant Human CCR6 protein(P51684)(1-47aa), fused to N-terminal His tag and C-terminal Myc tag, was expressed in E. coli.
Species	Human
Source	E.coli
ProteinLength	1-47aa
Form	If the delivery form is liquid, the default storage buffer is Tris/PBS-based buffer, 5%-50% glycerol. If the delivery form is lyophilized powder, the buffer before lyophilization is Tris/PBS-based buffer, 6% Trehalose, pH 8.0.
Molecular Mass	12.9 kDa
Purity	Greater than 85% as determined by SDS-PAGE.
Storage	Store at -20°C/-80°C upon receipt, aliquoting is necessary for mutiple use. Avoid repeated freeze-thaw cycles.
Reconstitution	It is recommended that sterile water be added to the vial to prepare a stock solution of 0.2 ug/ul. Centrifuge the vial at 4°C before opening to recover the entire contents.

GENE INFORMATION

 Tel: 1-631-559-9269 1-516-512-3133

 Email: info@creative-biomart.com  Fax: 1-631-938-8127

 45-1 Ramsey Road, Shirley, NY 11967, USA

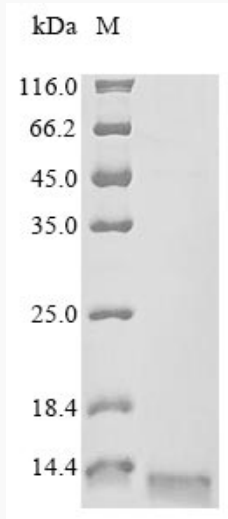
Gene Name	CCR6 chemokine (C-C motif) receptor 6 [Homo sapiens]
Official Symbol	CCR6
Synonyms	CCR6; chemokine (C-C motif) receptor 6; STRL22; C-C chemokine receptor type 6; BN 1; CD196; CKR L3; CMKBR6; DCR2; DRY 6; GPR CY4; GPR29; LARC receptor; chemokine receptor-like 3; chemokine (C-C) receptor 6; G protein-coupled receptor 29; G-protein coupled receptor 29; seven-transmembrane receptor, lymphocyte, 22; BN-1; DRY6; CCR-6; CKRL3; CKR-L3; GPRCY4; CC-CKR-6; C-C CKR-6;
Gene ID	1235
mRNA Refseq	NM_004367
Protein Refseq	NP_004358
MIM	601835
UniProt ID	P51684

 Tel: 1-631-559-9269 1-516-512-3133

 Email: info@creative-biomart.com  Fax: 1-631-938-8127

 45-1 Ramsey Road, Shirley, NY 11967, USA

SDS-PAGE



 Tel: 1-631-559-9269 1-516-512-3133

 Email: info@creative-biomart.com  Fax: 1-631-938-8127

 45-1 Ramsey Road, Shirley, NY 11967, USA