

Recombinant Human CCR6 Full Length Transmembrane Protein, His-SUMO-tagged

Cat. No. CCR6-11H Lot. No. (See product label)

SPECIFICATION

Product Overview

Recombinant Human CCR6 Protein(NP_004358)(1-374aa), fused to two N-terminal tags, His tag and SUMO tag, was expressed in E. coli.

Species

Human

Source

E.coli

ProteinLength

1-374aa

Form

If the delivery form is liquid, the default storage buffer is Tris/PBS-based buffer, 5%-50% glycerol.
If the delivery form is lyophilized powder, the buffer before lyophilization is Tris/PBS-based buffer, 6% Trehalose, pH 8.0.

Molecular Mass

58.5 kDa

AA Sequence

MSGESMNFSDVFDSSDYFVSVNTSYYSVDSEMLLCSLQEVQRQFSRLFVPIAYSLIC
VFGLLGNILVVITFAFYKKARSMTDVYLLNMAIADILFVLTLPFWAVSHATGAWVFSNA
TCKLLKGIYAINFNCGMLLLTCISMDRYIAIVQATKSFRLRSRTLPRSKIICLVVWGLSVI
ISSSTFVFNQKYNTQGSDVCEPKYQTVSEPIRWWKLLMLGLELLFGFFIPLMFMIFCYT
FIVKTLVQAQNSKRHKAIRVIIAVVLVFLACQIPHNMVLLVTAANLGKMNRSCQSEKLI
GYTKTVTEVLAFLHCCLNPLYAFIGQKFRNYFLKILKDLWCVRRKYKSSGFSCAGR
YSENISRQTSETADNDNASSFTM

 Tel: 1-631-559-9269 1-516-512-3133

 Email: info@creative-biomart.com  Fax: 1-631-938-8127

 45-1 Ramsey Road, Shirley, NY 11967, USA

Purity	Greater than 85% as determined by SDS-PAGE.
Storage	Store at -20°C/-80°C upon receipt, aliquoting is necessary for mutiple use. Avoid repeated freeze-thaw cycles.
Reconstitution	Please reconstitute protein in deionized sterile water to a concentration of 0.1-1.0 mg/mL. We recommend to add 5-50% of glycerol (final concentration) and aliquot for long-term storage at -20°C/-80°C. Our default final concentration of glycerol is 50%.

GENE INFORMATION

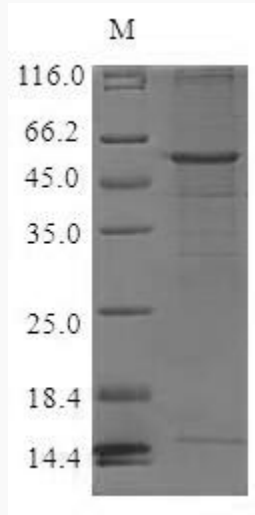
Gene Name	CCR6 chemokine (C-C motif) receptor 6 [Homo sapiens]
Official Symbol	CCR6
Synonyms	CCR6; chemokine (C-C motif) receptor 6; STRL22; C-C chemokine receptor type 6; BN 1; CD196; CKR L3; CMKBR6; DCR2; DRY 6; GPR CY4; GPR29; LARC receptor; chemokine receptor-like 3; chemokine (C-C) receptor 6; G protein-coupled receptor 29; G-protein coupled receptor 29; seven-transmembrane receptor, lymphocyte, 22; BN-1; DRY6; CCR-6; CKRL3; CKR-L3; GPRCY4; CC-CKR-6; C-C CKR-6;
Gene ID	1235
mRNA Refseq	NM_004367
Protein Refseq	NP_004358
MIM	601835
UniProt ID	P51684

 Tel: 1-631-559-9269 1-516-512-3133

 Email: info@creative-biomart.com  Fax: 1-631-938-8127

 45-1 Ramsey Road, Shirley, NY 11967, USA

SDS-PAGE



 Tel: 1-631-559-9269 1-516-512-3133

 Email: info@creative-biomart.com  Fax: 1-631-938-8127

 45-1 Ramsey Road, Shirley, NY 11967, USA