

## Active Recombinant Human CCR6 Full Length Transmembrane protein(Nanodisc)

Cat. No. CCR6-2937H Lot. No. (See product label)

### SPECIFICATION

**Product Overview**

Recombinant Human CCR6 Full Length Transmembrane protein(P51684), was expressed in HEK293.

**Species**

Human

**Source**

HEK293

**Form**

Lyophilized from nanodisc solubilization buffer (20 mM Tris-HCl, 150 mM NaCl, pH 8.0). Normally 5% – 8% trehalose is added as protectants before lyophilization. Please see Certificate of Analysis for specific instructions.

**Bio-activity**

Elisa plates were pre-coated with Flag Tag CCR6-Nanodisc (0.2µg/per well). Serial diluted anti-Flag monoclonal antibody solutions were added, washed, and incubated with secondary antibody before Elisa reading. From above data, the EC50 for anti-Flag monoclonal antibody binding with CCR6-Nanodisc is 2.691ng/ml.

**Molecular Mass**

The human full length CCR6 protein has a MW of 42.5 kDa.

**Storage**

Store at -20°C to -80°C for 12 months in lyophilized form. After reconstitution, if not intended for use within a month, aliquot and store at -80°C (Avoid repeated freezing and thawing). Lyophilized proteins are shipped at ambient temperature.

**Reconstitution**

It is recommended that sterile water be added to the vial to prepare a stock solution of 0.2 ug/ul. Centrifuge the vial at 4°C before opening to recover the entire contents.

 Tel: 1-631-559-9269 1-516-512-3133

 Email: [info@creative-biomart.com](mailto:info@creative-biomart.com)  Fax: 1-631-938-8127

 45-1 Ramsey Road, Shirley, NY 11967, USA

**Full Length** Full L.

## GENE INFORMATION

**Gene Name** CCR6 chemokine (C-C motif) receptor 6 [ Homo sapiens ]

**Official Symbol** CCR6

**Synonyms** CCR6; chemokine (C-C motif) receptor 6; STRL22; C-C chemokine receptor type 6; BN 1; CD196; CKR L3; CMKBR6; DCR2; DRY 6; GPR CY4; GPR29; LARC receptor; chemokine receptor-like 3; chemokine (C-C) receptor 6; G protein-coupled receptor 29; G-protein coupled receptor 29; seven-transmembrane receptor, lymphocyte, 22; BN-1; DRY6; CCR-6; CKRL3; CKR-L3; GPRCY4; CC-CKR-6; C-C CKR-6;

**Gene ID** 1235

**mRNA Refseq** NM\_004367

**Protein Refseq** NP\_004358

**MIM** 601835

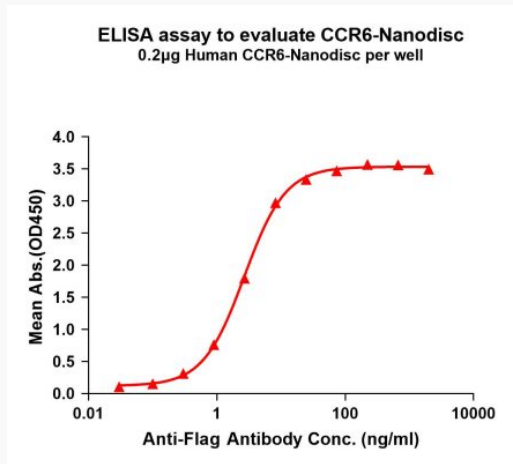
**UniProt ID** P51684

 Tel: 1-631-559-9269 1-516-512-3133

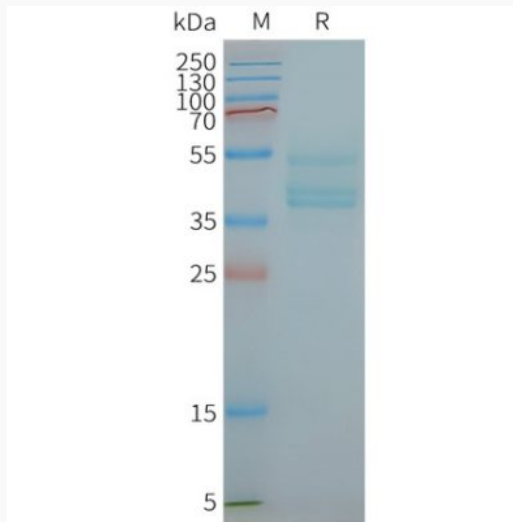
 Email: [info@creative-biomart.com](mailto:info@creative-biomart.com)  Fax: 1-631-938-8127

 45-1 Ramsey Road, Shirley, NY 11967, USA

**Activity**



**SDS-PAGE**



 Tel: 1-631-559-9269 1-516-512-3133

 Email: [info@creative-biomart.com](mailto:info@creative-biomart.com)  Fax: 1-631-938-8127

 45-1 Ramsey Road, Shirley, NY 11967, USA