

## Recombinant Human CCR7 protein, His&Myc-tagged

Cat. No. CCR7-1177H Lot. No. (See product label)

### SPECIFICATION

<b>Product Overview</b>	Recombinant Human CCR7 protein(P32248)(332-378aa), fused to N-terminal His tag and C-terminal Myc tag, was expressed in E. coli.
<b>Species</b>	Human
<b>Source</b>	E.coli
<b>ProteinLength</b>	332-378aa
<b>Form</b>	If the delivery form is liquid, the default storage buffer is Tris/PBS-based buffer, 5%-50% glycerol. If the delivery form is lyophilized powder, the buffer before lyophilization is Tris/PBS-based buffer, 6% Trehalose, pH 8.0.
<b>Molecular Mass</b>	13.0 kDa
<b>Purity</b>	Greater than 85% as determined by SDS-PAGE.
<b>Storage</b>	Store at -20°C/-80°C upon receipt, aliquoting is necessary for mutiple use. Avoid repeated freeze-thaw cycles.
<b>Reconstitution</b>	It is recommended that sterile water be added to the vial to prepare a stock solution of 0.2 ug/ul. Centrifuge the vial at 4°C before opening to recover the entire contents.

### GENE INFORMATION

 Tel: 1-631-559-9269 1-516-512-3133

 Email: [info@creative-biomart.com](mailto:info@creative-biomart.com)  Fax: 1-631-938-8127

 45-1 Ramsey Road, Shirley, NY 11967, USA

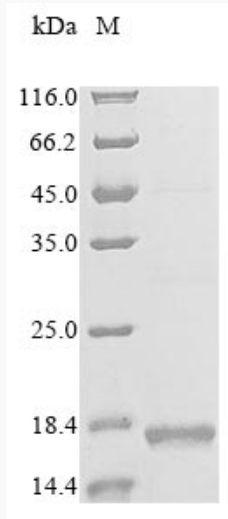
<b>Gene Name</b>	CCR7 chemokine (C-C motif) receptor 7 [ Homo sapiens ]
<b>Official Symbol</b>	CCR7
<b>Synonyms</b>	CCR7; chemokine (C-C motif) receptor 7; CMKBR7, EBI1; C-C chemokine receptor type 7; BLR2; CD197; CDw197; CCR-7; CC-CKR-7; C-C CKR-7; MIP-3 beta receptor; CC chemokine receptor 7; chemokine (C-C) receptor 7; Epstein-Barr virus induced gene 1; EBV-induced G protein-coupled receptor 1; EBV-induced G-protein coupled receptor 1; Epstein-Barr virus induced G-protein coupled receptor; lymphocyte-specific G protein-coupled peptide receptor; epstein-Barr virus-induced G-protein coupled receptor 1; EBI1; CMKBR7;
<b>Gene ID</b>	1236
<b>mRNA Refseq</b>	NM_001838
<b>Protein Refseq</b>	NP_001829
<b>MIM</b>	600242
<b>UniProt ID</b>	P32248

 Tel: 1-631-559-9269 1-516-512-3133

 Email: [info@creative-biomart.com](mailto:info@creative-biomart.com)  Fax: 1-631-938-8127

 45-1 Ramsey Road, Shirley, NY 11967, USA

**SDS-PAGE**



 Tel: 1-631-559-9269 1-516-512-3133

 Email: [info@creative-biomart.com](mailto:info@creative-biomart.com)  Fax: 1-631-938-8127

 45-1 Ramsey Road, Shirley, NY 11967, USA