

Recombinant Human CCR7 Full Length Transmembrane protein(Nanodisc), His-tagged, FITC labeled

Cat. No. CCR7-8435H Lot. No. (See product label)

SPECIFICATION

Product Overview	FITC-labeled Recombinant Human CCR7 Full Length Transmembrane protein(Nanodisc)(P32248)(Met1-Pro378), fused with C-terminal His tag, was expressed in HEK293.
Species	Human
Source	HEK293
ProteinLength	Met1-Pro378
Tag	C-His
Conjugation/Label	FITC
Form	Supplied as 0.22 um filtered solution in PBS (pH 7.4).
Bio-activity	Immobilized FITC-equivalent Human CCR7 Nanodisc, His Tag at 1ug/ml (100ul/well) on the plate. Dose response curve for Anti-CCR7 Antibody, hFc Tag with the EC50 of 0.21ug/ml determined by ELISA. The affinity constant of 4.11 nM as determined in SPR assay (Biacore T200).
Molecular Mass	The protein has a predicted MW of 67.70 kDa.
Endotoxin	Less than 1EU per ug by the LAL method.

 Tel: 1-631-559-9269 1-516-512-3133

 Email: info@creative-biomart.com  Fax: 1-631-938-8127

 45-1 Ramsey Road, Shirley, NY 11967, USA

Storage	Valid for 12 months from date of receipt when stored at -80°C.; Recommend to aliquot the protein into smaller quantities for optimal storage. Please minimize freeze-thaw cycles.
Reconstitution	It is recommended that sterile water be added to the vial to prepare a stock solution of 0.2 ug/ul. Centrifuge the vial at 4°C before opening to recover the entire contents.
Conjugation	FITC

GENE INFORMATION

Gene Name	CCR7 chemokine (C-C motif) receptor 7 [Homo sapiens]
Official Symbol	CCR7
Synonyms	CCR7; chemokine (C-C motif) receptor 7; CMKBR7, EBI1; C-C chemokine receptor type 7; BLR2; CD197; CDw197; CCR-7; CC-CKR-7; C-C CKR-7; MIP-3 beta receptor; CC chemokine receptor 7; chemokine (C-C) receptor 7; Epstein-Barr virus induced gene 1; EBV-induced G protein-coupled receptor 1; EBV-induced G-protein coupled receptor 1; Epstein-Barr virus induced G-protein coupled receptor; lymphocyte-specific G protein-coupled peptide receptor; epstein-Barr virus-induced G-protein coupled receptor 1; EBI1; CMKBR7;
Gene ID	1236
mRNA Refseq	NM_001838
Protein Refseq	NP_001829
MIM	600242

 Tel: 1-631-559-9269 1-516-512-3133

 Email: info@creative-biomart.com  Fax: 1-631-938-8127

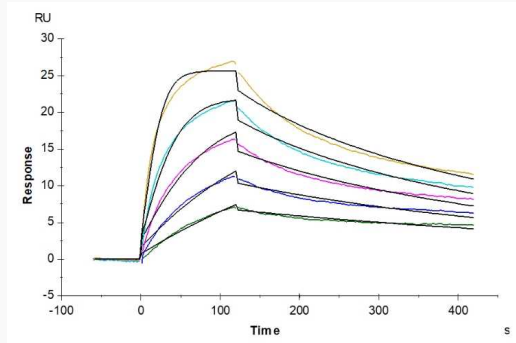
 45-1 Ramsey Road, Shirley, NY 11967, USA



UniProt ID

P32248

Activity



Tel: 1-631-559-9269 1-516-512-3133

Email: info@creative-biomart.com Fax: 1-631-938-8127

45-1 Ramsey Road, Shirley, NY 11967, USA