

## Recombinant Human CCR8 Protein, mFc-Tagged

Cat. No. CCR8-01H Lot. No. (See product label)

### SPECIFICATION

<b>Product Overview</b>	Recombinant Human CCR8 protein with C-terminal mFc tag was expressed in HEK293 cell.
<b>Species</b>	Human
<b>Source</b>	HEK293
<b>Description</b>	<p>This gene encodes a member of the beta chemokine receptor family, which is predicted to be a seven transmembrane protein similar to G protein-coupled receptors. Chemokines and their receptors are important for the migration of various cell types into the inflammatory sites. This receptor protein preferentially expresses in the thymus. I-309, thymus activation-regulated cytokine (TARC) and macrophage inflammatory protein-1 beta (MIP-1 beta) have been identified as ligands of this receptor. Studies of this receptor and its ligands suggested its role in regulation of monocyte chemotaxis and thymic cell apoptosis. More specifically, this receptor may contribute to the proper positioning of activated T cells within the antigenic challenge sites and specialized areas of lymphoid tissues. This gene is located at the chemokine receptor gene cluster region.</p>
<b>Form</b>	Lyophilized
<b>Molecular Mass</b>	The protein has a predicted molecular mass of 30.2 kDa after removal of the signal peptide. The apparent molecular mass of CCR8-mFc is approximately 33-55 kDa due to glycosylation.

 Tel: 1-631-559-9269 1-516-512-3133

 Email: [info@creative-biomart.com](mailto:info@creative-biomart.com)  Fax: 1-631-938-8127

 45-1 Ramsey Road, Shirley, NY 11967, USA

<b>Purity</b>	The purity of the protein is greater than 95% as determined by SDS-PAGE and Coomassie blue staining.
<b>Usage</b>	Research use only
<b>Storage</b>	Store at -20°C to -80°C for 12 months in lyophilized form. After reconstitution, if not intended for use within a month, aliquot and store at -80°C (Avoid repeated freezing and thawing).Lyophilized proteins are shipped at ambient temperature.
<b>Storage Buffer</b>	Lyophilized from sterile PBS, pH 7.4.
<b>Reconstitution</b>	Normally 5 % - 8% trehalose is added as protectants before lyophilization.
<b>Shipping</b>	Lyophilized proteins are shipped at ambient temperature.

## GENE INFORMATION

<b>Gene Name</b>	CCR8 C-C motif chemokine receptor 8 [ Homo sapiens (human) ]
<b>Official Symbol</b>	CCR8
<b>Synonyms</b>	CCR-8, CMKBRL2, CKR-L1, GPRCY6, TER1, CDw198
<b>Gene ID</b>	1237
<b>mRNA Refseq</b>	NM_005201.4
<b>Protein Refseq</b>	NP_005192.1
<b>MIM</b>	601834

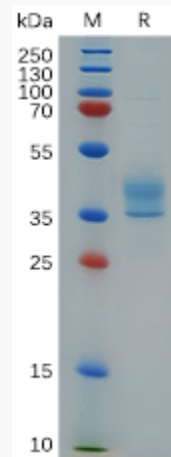
 Tel: 1-631-559-9269 1-516-512-3133

 Email: [info@creative-biomart.com](mailto:info@creative-biomart.com)  Fax: 1-631-938-8127

 45-1 Ramsey Road, Shirley, NY 11967, USA

UniProt ID

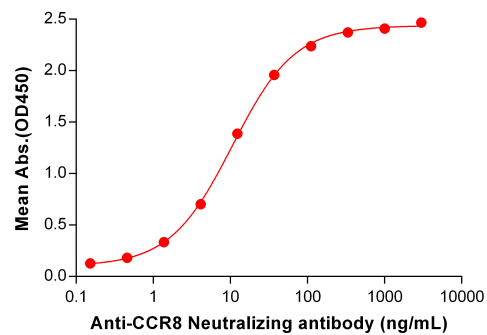
P51685



Human CCR8, mFc Tag on SDS-PAGE under reducing condition.

**Human CCR8, mFc Tagged protein ELISA**

0.2 µg of Human CCR8, mFc tagged protein per well



ELISA plate pre-coated by 2 µg/mL (100 µL/well) Human CCR8 Protein, mFc Tag can bind Anti-CCR8 Neutralizing antibody in a linear range of 1.37–111.11 ng/mL.

Tel: 1-631-559-9269 1-516-512-3133

Email: [info@creative-biomart.com](mailto:info@creative-biomart.com) Fax: 1-631-938-8127

45-1 Ramsey Road, Shirley, NY 11967, USA