

# Recombinant Rhesus macaque CCR8 Full Length Transmembrane protein, His-tagged

Cat. No. CCR8-0294R Lot. No. (See product label)

## SPECIFICATION

### Product Overview

Recombinant Rhesus macaque CCR8 protein(O97665)(1-356aa), fused with N-terminal His tag, was expressed in in vitro E. coli expression system.

### Species

Rhesus macaque

### Source

E.coli

### ProteinLength

1-356aa

### Form

If the delivery form is liquid, the default storage buffer is Tris/PBS-based buffer, 5%-50% glycerol.  
If the delivery form is lyophilized powder, the buffer before lyophilization is Tris/PBS-based buffer, 6% Trehalose, pH 8.0.

### Molecular Mass

42.7 kDa

### AA Sequence

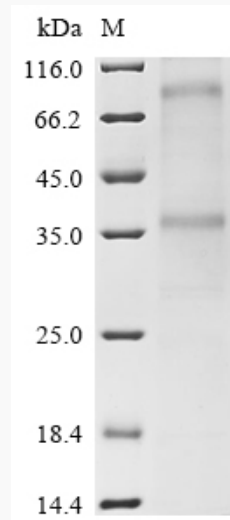
MDYTLDPSTMTTMDYYYYPDSLSSPCDGEIQRNDKLLLAVFYCLLFVFSLLGNSLVIL  
VLVVCKKLRNITDIYLLNLALSDLLFVFSFPFQTYQLDQWVFGTVMCKVVSFGFYIG  
FYSSMFFITLMSVDRYLAVVHAVYAIKVRTIRMGTTLTLLVWLTAIMATIPLLVFYQVA  
SEDGVLQCYSFYNQQTLLKWKIFTNFEMNILGLLIPFTIFMFCYIKILHQLKRCQNHNKT  
KAIRLVLIVVIASLLFWVPFNVLFLTSLHSMHILDGCSISQQLNYATHVTEIISFTHCCV  
NPVIYAFVGEKFKKHLSEIFQKSCSHIFIYLG RQMPRESCEKSSSCQQHSFRSSSIDYI  
L

 Tel: 1-631-559-9269 1-516-512-3133

 Email: [info@creative-biomart.com](mailto:info@creative-biomart.com)  Fax: 1-631-938-8127

 45-1 Ramsey Road, Shirley, NY 11967, USA

<b>Purity</b>	Greater than 85% as determined by SDS-PAGE.
<b>Storage</b>	Store at -20°C/-80°C upon receipt, aliquoting is necessary for mutiple use. Avoid repeated freeze-thaw cycles.
<b>Reconstitution</b>	Please reconstitute protein in deionized sterile water to a concentration of 0.1-1.0 mg/mL. We recommend to add 5-50% of glycerol (final concentration) and aliquot for long-term storage at -20°C/-80°C.

**SDS-PAGE**

 Tel: 1-631-559-9269 1-516-512-3133

 Email: [info@creative-biomart.com](mailto:info@creative-biomart.com)  Fax: 1-631-938-8127

 45-1 Ramsey Road, Shirley, NY 11967, USA