

## Recombinant Human CCR8 Protein, GST-Tagged

Cat. No. CCR8-0698H Lot. No. (See product label)

### SPECIFICATION

<b>Product Overview</b>	Human CCR8 full-length ORF (NP_005192.1, 1 a.a. - 355 a.a.) recombinant protein with GST-tag at N-terminal.
<b>Species</b>	Human
<b>Source</b>	Wheat Germ
<b>Description</b>	<p>This gene encodes a member of the beta chemokine receptor family, which is predicted to be a seven transmembrane protein similar to G protein-coupled receptors. Chemokines and their receptors are important for the migration of various cell types into the inflammatory sites. This receptor protein preferentially expresses in the thymus. I-309, thymus activation-regulated cytokine (TARC) and macrophage inflammatory protein-1 beta (MIP-1 beta) have been identified as ligands of this receptor. Studies of this receptor and its ligands suggested its role in regulation of monocyte chemotaxis and thymic cell apoptosis. More specifically, this receptor may contribute to the proper positioning of activated T cells within the antigenic challenge sites and specialized areas of lymphoid tissues. This gene is located at the chemokine receptor gene cluster region. [provided by RefSeq, Jul 2008]</p>
<b>Molecular Mass</b>	67.2 kDa
<b>AA Sequence</b>	<p>MDYTLDL SVTTVTDYYYPDIFSSPCDAELIQTNGKLLAVFYCLLFVFSLLGNSLVILVL  VVKKLRISITDVYLLNLALSDLLFVFSFPFQTYLLDQWVFGTVMCKVVSFGFYIGFY  SSMFFITLMSVDRYLAVVHAVYALKVRTIRMGTTLCLAVWLTAIMATIPLLVFYQVASE</p>

 Tel: 1-631-559-9269 1-516-512-3133

 Email: [info@creative-biomart.com](mailto:info@creative-biomart.com)  Fax: 1-631-938-8127

 45-1 Ramsey Road, Shirley, NY 11967, USA

DGVLQCYSFYNNQQLKWKIFTNFKMNILGLLIPFTIFMFCYIKILHQLKRCQNHNKTKAI  
 RLVLIVVIASLLFWVPFNVVFLFTSLHSMHILDGCSISQQLTYATHVTEIISFTHCCVNP  
 VIYAFVGEKFKKHLSEIFQKSCSQIFNYLGRQMPRESCEKSSSCQQHSSRSSSSVDYI  
 L

<b>Applications</b>	Enzyme-linked Immunoabsorbent Assay Western Blot (Recombinant protein) Antibody Production Protein Array
<b>Storage</b>	Store at -80 centigrade. Aliquot to avoid repeated freezing and thawing.
<b>Storage Buffer</b>	50 mM Tris-HCl, 10 mM reduced Glutathione, pH=8.0 in the elution buffer.

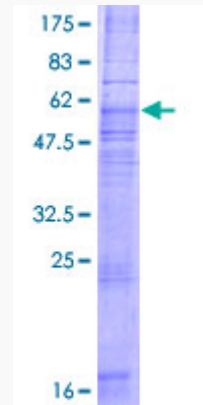
## GENE INFORMATION

<b>Gene Name</b>	CCR8 chemokine (C-C motif) receptor 8 [ Homo sapiens ]
<b>Official Symbol</b>	CCR8
<b>Synonyms</b>	CCR8; chemokine (C-C motif) receptor 8; CMKBR8, CMKBRL2; C-C chemokine receptor type 8; CDw198; CKR L1; CY6; GPR CY6; TER1; CC chemokine receptor 8; chemokine receptor-like 1; chemokine (C-C) receptor 8; CC chemokine receptor CHEMR1; CC-chemokine receptor chemr1; chemokine (C-C) receptor-like 2; CCR-8; CKRL1; CMKBR8; GPRCY6; CMKBRL2; CC-CKR-8; MGC129966; MGC129973;
<b>Gene ID</b>	1237
<b>mRNA Refseq</b>	NM_005201
<b>Protein Refseq</b>	NP_005192


**MIM** 601834

**UniProt ID** P51685


**Quality Control  
Testing**



12.5% SDS-PAGE Stained with Coomassie Blue.

 Tel: 1-631-559-9269 1-516-512-3133

 Email: [info@creative-biomart.com](mailto:info@creative-biomart.com)  Fax: 1-631-938-8127

 45-1 Ramsey Road, Shirley, NY 11967, USA