

## Recombinant Human CCR8 protein, mFc-tagged

Cat. No. CCR8-1440H Lot. No. (See product label)

### SPECIFICATION

<b>Product Overview</b>	Recombinant Human CCR8 protein(P51685-1)(Met1-Lys35), fused with C-terminal mFc tag, was expressed in HEK293.
<b>Species</b>	Human
<b>Source</b>	C-mFc
<b>ProteinLength</b>	Met1-Lys35
<b>Tag</b>	C-mFc
<b>Form</b>	Lyophilized from 0.22µm filtered solution in PBS (pH 7.4). Normally 8% trehalose is added as protectant before lyophilization.
<b>Bio-activity</b>	Immobilized Human CCR8, mFc Tag at 0.5µg/ml (100µl/well) on the plate. Dose response curve for Anti-CCR8 Antibody, hFc Tag with the EC50 of 11.1ng/ml determined by ELISA.
<b>Molecular Mass</b>	The protein has a predicted MW of 30.25 kDa. Due to glycosylation, the protein migrates to 40-50 kDa based on Tris-Bis PAGE result.
<b>Endotoxin</b>	Less than 1EU per µg by the LAL method.
<b>Purity</b>	> 95% as determined by Tris-Bis PAGE; > 95% as determined by HPLC.

 Tel: 1-631-559-9269 1-516-512-3133

 Email: [info@creative-biomart.com](mailto:info@creative-biomart.com)  Fax: 1-631-938-8127

 45-1 Ramsey Road, Shirley, NY 11967, USA

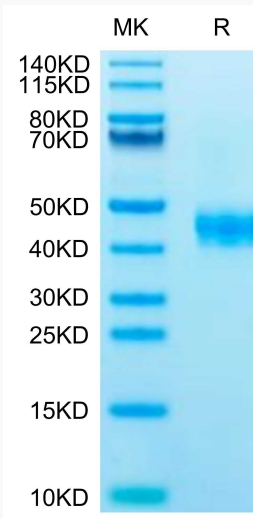
<b>Storage</b>	Reconstituted protein stable at -80°C for 12 months, 4°C for 1 week. Use a manual defrost freezer and avoid repeated freeze-thaw cycles.
<b>Reconstitution</b>	Centrifuge tubes before opening. Reconstituting to a concentration more than 100 µg/ml is recommended. Dissolve the lyophilized protein in distilled water.
<b>GENE INFORMATION</b>	
<b>Gene Name</b>	CCR8 chemokine (C-C motif) receptor 8 [ Homo sapiens ]
<b>Official Symbol</b>	CCR8
<b>Synonyms</b>	CCR8; chemokine (C-C motif) receptor 8; CMKBR8, CMKBRL2; C-C chemokine receptor type 8; CDw198; CKR L1; CY6; GPR CY6; TER1; CC chemokine receptor 8; chemokine receptor-like 1; chemokine (C-C) receptor 8; CC chemokine receptor CHEMR1; CC-chemokine receptor chemr1; chemokine (C-C) receptor-like 2; CCR-8; CKRL1; CMKBR8; GPRCY6; CMKBRL2; CC-CKR-8; MGC129966; MGC129973;
<b>Gene ID</b>	1237
<b>mRNA Refseq</b>	NM_005201
<b>Protein Refseq</b>	NP_005192
<b>MIM</b>	601834
<b>UniProt ID</b>	P51685

 Tel: 1-631-559-9269 1-516-512-3133

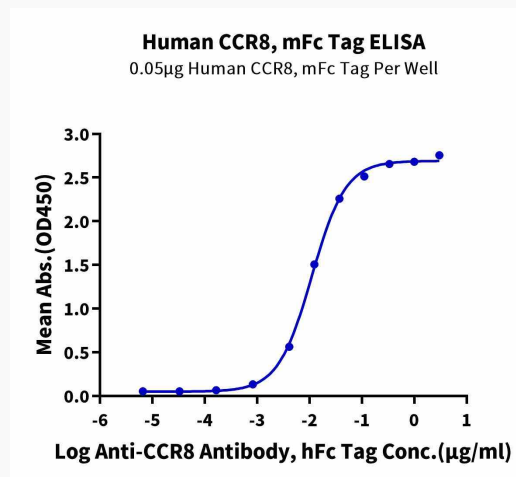
 Email: [info@creative-biomart.com](mailto:info@creative-biomart.com)  Fax: 1-631-938-8127

 45-1 Ramsey Road, Shirley, NY 11967, USA

**Tris-Bis PAGE**



**ELISA**



Tel: 1-631-559-9269 1-516-512-3133

Email: [info@creative-biomart.com](mailto:info@creative-biomart.com) Fax: 1-631-938-8127

45-1 Ramsey Road, Shirley, NY 11967, USA