

Recombinant Human CCR8 protein, hFc-tagged

Cat. No. CCR8-1457H Lot. No. (See product label)

SPECIFICATION

Product Overview	Recombinant Human CCR8 protein(P51685-1)(Met1-Lys35), fused with C-terminal hFc tag, was expressed in HEK293.
Species	Human
Source	C-hFc
ProteinLength	Met1-Lys35
Tag	C-hFc
Form	Lyophilized from 0.22µm filtered solution in PBS (pH 7.4). Normally 8% trehalose is added as protectant before lyophilization.
Bio-activity	Immobilized Human CCR8, hFc Tag at 1µg/ml (100µl/well) on the plate. Dose response curve for Biotinylated Anti-CCR8 Antibody, hFc Tag with the EC50 of 29.6ng/ml determined by ELISA.
Molecular Mass	The protein has a predicted MW of 30.62 kDa. Due to glycosylation, the protein migrates to 40-50 kDa based on Tris-Bis PAGE result.
Endotoxin	Less than 1EU per µg by the LAL method.
Purity	> 95% as determined by Tris-Bis PAGE; > 95% as determined by HPLC.

 Tel: 1-631-559-9269 1-516-512-3133

 Email: info@creative-biomart.com  Fax: 1-631-938-8127

 45-1 Ramsey Road, Shirley, NY 11967, USA

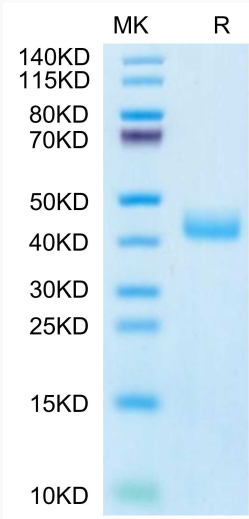
Storage	Reconstituted protein stable at -80°C for 12 months, 4°C for 1 week. Use a manual defrost freezer and avoid repeated freeze-thaw cycles.
Reconstitution	Centrifuge tubes before opening. Reconstituting to a concentration more than 100 µg/ml is recommended. Dissolve the lyophilized protein in distilled water.
GENE INFORMATION	
Gene Name	CCR8 chemokine (C-C motif) receptor 8 [Homo sapiens]
Official Symbol	CCR8
Synonyms	CCR8; chemokine (C-C motif) receptor 8; CMKBR8, CMKBRL2; C-C chemokine receptor type 8; CDw198; CKR L1; CY6; GPR CY6; TER1; CC chemokine receptor 8; chemokine receptor-like 1; chemokine (C-C) receptor 8; CC chemokine receptor CHEMR1; CC-chemokine receptor chemr1; chemokine (C-C) receptor-like 2; CCR-8; CKRL1; CMKBR8; GPRCY6; CMKBRL2; CC-CKR-8; MGC129966; MGC129973;
Gene ID	1237
mRNA Refseq	NM_005201
Protein Refseq	NP_005192
MIM	601834
UniProt ID	P51685

 Tel: 1-631-559-9269 1-516-512-3133

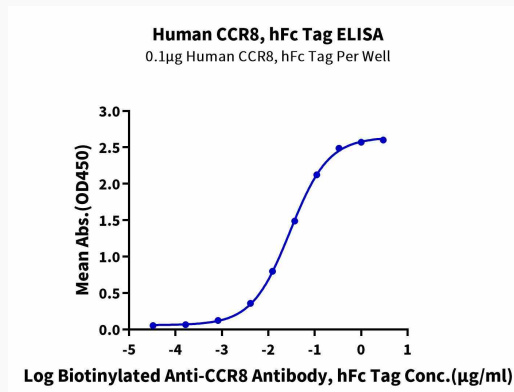
 Email: info@creative-biomart.com  Fax: 1-631-938-8127

 45-1 Ramsey Road, Shirley, NY 11967, USA

Tris-Bis PAGE



ELISA



Tel: 1-631-559-9269 1-516-512-3133

Email: info@creative-biomart.com Fax: 1-631-938-8127

45-1 Ramsey Road, Shirley, NY 11967, USA