

Recombinant Human CCR8 Transmembrane protein, His-tagged

Cat. No. CCR8-1479H **Lot. No.** (See product label)

SPECIFICATION

Product Overview	Recombinant Human CCR8 protein(P51685)(74-129aa), fused to N-terminal His tag, was expressed in E. coli.
Species	Human
Source	E.coli
ProteinLength	74-129aa
Form	If the delivery form is liquid, the default storage buffer is Tris/PBS-based buffer, 5%-50% glycerol. If the delivery form is lyophilized powder, the buffer before lyophilization is Tris/PBS-based buffer, 6% Trehalose, pH 8.0.
Molecular Mass	9.4 kDa
AA Sequence	LLNLALSDLLFVFSFPFQTYLLDQWVFGTVMCKVVSGFYIIGFYSSMFFITLMSV
Purity	Greater than 85% as determined by SDS-PAGE.
Storage	Store at -20°C/-80°C upon receipt, aliquoting is necessary for mutiple use. Avoid repeated freeze-thaw cycles.
Reconstitution	Please reconstitute protein in deionized sterile water to a concentration of 0.1-1.0

 Tel: 1-631-559-9269 1-516-512-3133

 Email: info@creative-biomart.com  Fax: 1-631-938-8127

 45-1 Ramsey Road, Shirley, NY 11967, USA

mg/mL. We recommend to add 5-50% of glycerol (final concentration) and aliquot for long-term storage at -20°C/-80°C. Our default final concentration of glycerol is 50%.

GENE INFORMATION

Gene Name CCR8 chemokine (C-C motif) receptor 8 [Homo sapiens]

Official Symbol CCR8

Synonyms CCR8; chemokine (C-C motif) receptor 8; CMKBR8, CMKBRL2; C-C chemokine receptor type 8; CDw198; CKR L1; CY6; GPR CY6; TER1; CC chemokine receptor 8; chemokine receptor-like 1; chemokine (C-C) receptor 8; CC chemokine receptor CHEMR1; CC-chemokine receptor chemr1; chemokine (C-C) receptor-like 2; CCR-8; CKRL1; CMKBR8; GPRCY6; CMKBRL2; CC-CKR-8; MGC129966; MGC129973;

Gene ID 1237

mRNA Refseq NM_005201

Protein Refseq NP_005192

MIM 601834

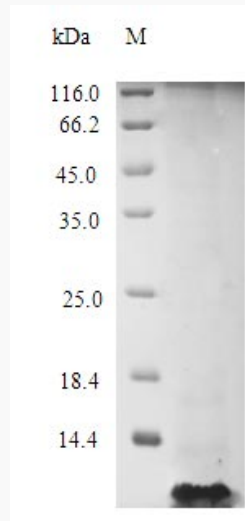
UniProt ID P51685

 Tel: 1-631-559-9269 1-516-512-3133

 Email: info@creative-biomart.com  Fax: 1-631-938-8127

 45-1 Ramsey Road, Shirley, NY 11967, USA

SDS-PAGE



 Tel: 1-631-559-9269 1-516-512-3133

 Email: info@creative-biomart.com  Fax: 1-631-938-8127

 45-1 Ramsey Road, Shirley, NY 11967, USA