

## Recombinant Mouse Ccr8 Protein

Cat. No. CCR8-3018M Lot. No. (See product label)

### SPECIFICATION

<b>Product Overview</b>	Recombinant Mouse Ccr8 Protein without tag was expressed in E. coli.
<b>Species</b>	Mouse
<b>Source</b>	E.coli
<b>Description</b>	Enables C-C chemokine receptor activity. Acts upstream of or within chemotaxis. Predicted to be located in plasma membrane. Predicted to be integral component of membrane. Predicted to be active in external side of plasma membrane. Is expressed in central nervous system; retina; and thymus primordium. Orthologous to human CCR8 (C-C motif chemokine receptor 8).
<b>Molecular Mass</b>	42.8 kDa
<b>AA Sequence</b>	MDYTMENVTMTDYYPDFFTAPCDAEFLLRGSMLYLAILYCVLFLVGLLGNLVLVILV VGCKKLRSITDIYLLNLAASDLLFVLSIPFQTHNLLDQWVFGTAMCKVVSGLYYIGFFS SMFFITLMSVDRLAIVHAVYAIKVRTASVGTALSLTVWLA AVTATIPLMVFYQVASED GMLQCFQFYEEQSLRWKLFTHFEINALGLLL PFAILLFCYVRILQQLRGCLNHNRTA IKLVLTVVIVSLLFWVPFNVALFLTSLHDLHILDGCATRQRLALAIHVTEVISFTHCCVN PVIYAFIGEKFKKHLMDVFQKSCSHIFLYLGRQMPVGALERQLSSNQRSSHSTLDDI L
<b>Purity</b>	≥ 85% by SDS-PAGE
<b>Storage</b>	Store it under sterile conditions at -20 to -80 centigrade. It is recommended that the

Tel: 1-631-559-9269 1-516-512-3133

Email: [info@creative-biomart.com](mailto:info@creative-biomart.com) Fax: 1-631-938-8127

45-1 Ramsey Road, Shirley, NY 11967, USA

protein be aliquoted for optimal storage. Avoid repeated freeze-thaw cycles.

**Storage Buffer**

Lyophilized from PBS, 0.05% FOS12, 6% Trehalose, pH 8.0  
The volume before lyophilization is 100 µL/vial.

**Reconstitution**

We recommend that this vial be briefly centrifuged prior to opening to bring the contents to the bottom. Please reconstitute protein in deionized sterile water to a concentration of 0.1-1.0 mg/mL. We recommend to add 5-50% of glycerol (final concentration) and aliquot for long-term storage at -20/-80 centigrade. Our default final concentration of glycerol is 50%. Customers could use it as reference.

## GENE INFORMATION

**Gene Name**

[Ccr8 chemokine \(C-C motif\) receptor 8 \[ Mus musculus \(house mouse\) \]](#)

**Official Symbol**

[Ccr8](#)

**Synonyms**

Ccr8; chemokine (C-C motif) receptor 8; C-C; CCR-8; CKR-8; mCCR8; Cmkbr8; CC-CKR-8; C-C CKR-8; C-C chemokine receptor type 8; C-C motif chemokine receptor 8

**Gene ID**

[12776](#)

**mRNA Refseq**

[NM\\_007720](#)

**Protein Refseq**


[NP\\_031746](#)

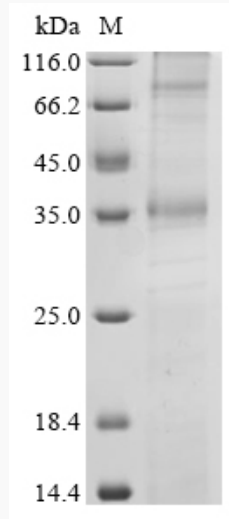
**UniProt ID**

[P56484](#)

 Tel: 1-631-559-9269 1-516-512-3133

 Email: [info@creative-biomart.com](mailto:info@creative-biomart.com)  Fax: 1-631-938-8127


 45-1 Ramsey Road, Shirley, NY 11967, USA

**SDS-PAGE**


Observed band size: Monomer: 37 kDa Dimer: 74 kDa

It is speculated that the protein forms a dimeric structure.

(Tris-Glycine gel) Discontinuous SDS-PAGE (reduced) with 5% enrichment gel and 15% separation gel. Boiling SDS-treated samples may result in membrane protein aggregation. Incubation at 37 centigrade for 10 min is an effective alternative.

 Tel: 1-631-559-9269 1-516-512-3133

 Email: [info@creative-biomart.com](mailto:info@creative-biomart.com)  Fax: 1-631-938-8127

 45-1 Ramsey Road, Shirley, NY 11967, USA