

Recombinant Human CCR8 Full Length Transmembrane protein, His-tagged

Cat. No. CCR8-481H Lot. No. (See product label)

SPECIFICATION

Product Overview

Recombinant Human CCR8 protein(P51685)(1-355aa), fused to C-terminal His tag, was expressed in E. coli.

Species

Human

Source

E.coli

ProteinLength

1-355aa

Form

If the delivery form is liquid, the default storage buffer is Tris/PBS-based buffer, 5%-50% glycerol.
If the delivery form is lyophilized powder, the buffer before lyophilization is Tris/PBS-based buffer, 6% Trehalose, pH 8.0.

Molecular Mass

41.7 kDa

AA Sequence

MDYTLDL SVTTVTDY YYPDIFSSPCDAELIQTNGKLLAVFYCLLFVFSLLGNSLVILVL
VVCKKLRSITDVYLLNLALSDLLFVFSFPFQTYLLDQWVFGTVMCKVVS GFYYIGFY
SSMFFITLMSVDRYLAVVHAVYALKVRTIRMGTTLCLAVWLTAIMATIPLL VFYQVASE
DGV LQCYSFY NQQTLKWKIFTNFKMNILGLLIPFTIFMFCYIKILHQLKRCQNHNKTKAI
RLVLIVVIASLLFWVPFNVVLF L TSLHSMHILDGCSISQQLTYATHVTEIISFTHCCVNP
VIYAFVGEKFKKHLSEIFQKSCSQIFNYLGRQMPRESCEKSSSCQQHSSRSSSDYI
L

 Tel: 1-631-559-9269 1-516-512-3133

 Email: info@creative-biomart.com  Fax: 1-631-938-8127

 45-1 Ramsey Road, Shirley, NY 11967, USA

Purity	Greater than 85% as determined by SDS-PAGE.
Storage	Store at -20°C/-80°C upon receipt, aliquoting is necessary for mutiple use. Avoid repeated freeze-thaw cycles.
Reconstitution	Please reconstitute protein in deionized sterile water to a concentration of 0.1-1.0 mg/mL. We recommend to add 5-50% of glycerol (final concentration) and aliquot for long-term storage at -20°C/-80°C. Our default final concentration of glycerol is 50%.

GENE INFORMATION

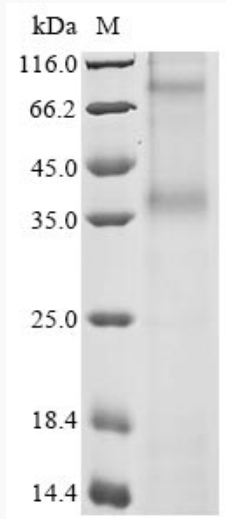
Gene Name	CCR8 chemokine (C-C motif) receptor 8 [Homo sapiens]
Official Symbol	CCR8
Synonyms	CCR8; chemokine (C-C motif) receptor 8; CMKBR8, CMKBRL2; C-C chemokine receptor type 8; CDw198; CKR L1; CY6; GPR CY6; TER1; CC chemokine receptor 8; chemokine receptor-like 1; chemokine (C-C) receptor 8; CC chemokine receptor CHEMR1; CC-chemokine receptor chemr1; chemokine (C-C) receptor-like 2; CCR-8; CKRL1; CMKBR8; GPRCY6; CMKBRL2; CC-CKR-8; MGC129966; MGC129973;
Gene ID	1237
mRNA Refseq	NM_005201
Protein Refseq	NP_005192
MIM	601834
UniProt ID	P51685

 Tel: 1-631-559-9269 1-516-512-3133

 Email: info@creative-biomart.com  Fax: 1-631-938-8127

 45-1 Ramsey Road, Shirley, NY 11967, USA

SDS-PAGE



 Tel: 1-631-559-9269 1-516-512-3133

 Email: info@creative-biomart.com  Fax: 1-631-938-8127

 45-1 Ramsey Road, Shirley, NY 11967, USA