

## Active Recombinant Human CCR8 Full Length Transmembrane protein, His-tagged(VLPs)

Cat. No. CCR8-485H Lot. No. (See product label)

### SPECIFICATION

<b>Product Overview</b>	Recombinant Human CCR8 protein(P51685)(1-355aa), fused to C-terminal His tag, was expressed in Mammalian cell.
<b>Species</b>	Human
<b>Source</b>	HEK293
<b>ProteinLength</b>	1-355aa
<b>Form</b>	PBS, pH 7.4, 6% trehalose
<b>Bio-activity</b>	Measured by its binding ability in a functional ELISA. Immobilized human CCR8 at 5 µg/ml can bind Anti-CCR8 recombinant Antibody, the the EC50 is 11.13-17.29 ng/ml.
<b>Molecular Mass</b>	42.2 kDa
<b>AA Sequence</b>	MDYTLDL SVTTVTDY YYPDIFSSPCDAELIQ TNGKLLLAVFYCLLFVFSLLGNSLVILVL VVCKKLRSITDVYLLNLALS DLLFVFSFPFQTYLLDQWVFGTVMCKVVS GFYYIGFY SSMFFITLMSVDRYLAVVHAVYALKVRTIRM GTTLCLAVWLTAIMATIPLL VFYQVASE DGV LQCYSFY NQQTLKWKIFTNFKMNILG LLIPTIFMFCYIKILHQLKRCQNHNKTKAI RLVLIVVIASLLFWVPFNVVLF L TSLHSMHILDGCSISQQLTYATHVTEIISFTHCCVNP VIYAFVGEKFKKHLSEIFQKSCSQIFNYLGRQMPRESCEKSSSCQQHSSRSSSDYI L

 Tel: 1-631-559-9269 1-516-512-3133

 Email: [info@creative-biomart.com](mailto:info@creative-biomart.com)  Fax: 1-631-938-8127

 45-1 Ramsey Road, Shirley, NY 11967, USA

<b>Endotoxin</b>	Less than 1.0 EU/ug as determined by LAL method.
<b>Storage</b>	Store at -20°C/-80°C upon receipt, aliquoting is necessary for mutiple use. Avoid repeated freeze-thaw cycles.
<b>Reconstitution</b>	Please reconstitute protein in deionized sterile water to a concentration of 0.1-1.0 mg/mL. We recommend to add 5-50% of glycerol (final concentration) and aliquot for long-term storage at -20°C/-80°C. Our default final concentration of glycerol is 50%.

## GENE INFORMATION

<b>Gene Name</b>	CCR8 chemokine (C-C motif) receptor 8 [ Homo sapiens ]
<b>Official Symbol</b>	CCR8
<b>Synonyms</b>	CCR8; chemokine (C-C motif) receptor 8; CMKBR8, CMKBRL2; C-C chemokine receptor type 8; CDw198; CKR L1; CY6; GPR CY6; TER1; CC chemokine receptor 8; chemokine receptor-like 1; chemokine (C-C) receptor 8; CC chemokine receptor CHEMR1; CC-chemokine receptor chemr1; chemokine (C-C) receptor-like 2; CCR-8; CKRL1; CMKBR8; GPRCY6; CMKBRL2; CC-CKR-8; MGC129966; MGC129973;
<b>Gene ID</b>	1237
<b>mRNA Refseq</b>	NM_005201
<b>Protein Refseq</b>	NP_005192
<b>MIM</b>	601834
<b>UniProt ID</b>	P51685

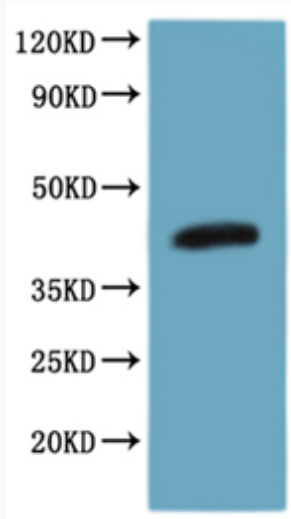
 Tel: 1-631-559-9269 1-516-512-3133

 Email: [info@creative-biomart.com](mailto:info@creative-biomart.com)  Fax: 1-631-938-8127

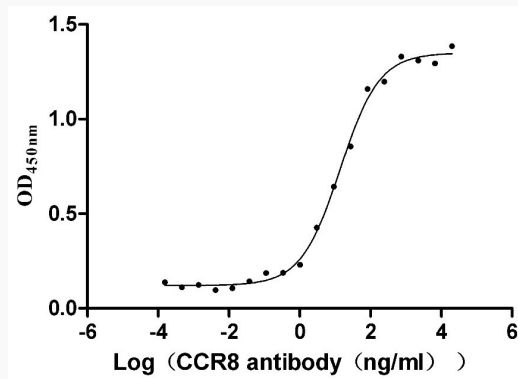
 45-1 Ramsey Road, Shirley, NY 11967, USA



SDS-PAGE



Activity



Tel: 1-631-559-9269 1-516-512-3133

Email: [info@creative-biomart.com](mailto:info@creative-biomart.com) Fax: 1-631-938-8127

45-1 Ramsey Road, Shirley, NY 11967, USA