

Recombinant Human CCR8 Protein, His-tagged

Cat. No. CCR8-647H Lot. No. (See product label)

SPECIFICATION

Product Overview Recombinant Human CCR8 Protein (Met1-Ile69) with His tag was expressed in E. coli.

Species Human

Source E.coli

ProteinLength Met1-Ile69

Description

This gene encodes a member of the beta chemokine receptor family, which is predicted to be a seven transmembrane protein similar to G protein-coupled receptors. Chemokines and their receptors are important for the migration of various cell types into the inflammatory sites. This receptor protein preferentially expresses in the thymus. I-309, thymus activation-regulated cytokine (TARC) and macrophage inflammatory protein-1 beta (MIP-1 beta) have been identified as ligands of this receptor. Studies of this receptor and its ligands suggested its role in regulation of monocyte chemotaxis and thymic cell apoptosis. More specifically, this receptor may contribute to the proper positioning of activated T cells within the antigenic challenge sites and specialized areas of lymphoid tissues. This gene is located at the chemokine receptor gene cluster region.

Form Freeze-dried powder

Molecular Mass Predicted Molecular Mass: 11.5 kDa; Accurate Molecular Mass: 14 kDa

 Tel: 1-631-559-9269 1-516-512-3133

 Email: info@creative-biomart.com  Fax: 1-631-938-8127

 45-1 Ramsey Road, Shirley, NY 11967, USA

Purity	> 90%
Applications	Positive Control; Immunogen; SDS-PAGE; WB.
Stability	The thermal stability is described by the loss rate. The loss rate was determined by accelerated thermal degradation test, that is, incubate the protein at 37 centigrade for 48h, and no obvious degradation and precipitation were observed. The loss rate is less than 5% within the expiration date under appropriate storage condition.
Storage	Avoid repeated freeze/thaw cycles. Store at 2-8 centigrade for one month. Aliquot and store at -80 centigrade for 12 months.
Storage Buffer	PBS, pH7.4, containing 0.01% SKL, 1mM DTT, 5% Trehalose and Proclin300.
Reconstitution	Reconstitute in 20mM Tris, 150mM NaCl (pH8.0) to a concentration of 0.1-1.0 mg/mL. Do not vortex.

GENE INFORMATION

Gene Name	CCR8 chemokine (C-C motif) receptor 8 [Homo sapiens (human)]
Official Symbol	CCR8
Synonyms	CCR8; chemokine (C-C motif) receptor 8; CMKBR8, CMKBRL2; C-C chemokine receptor type 8; CDw198; CKR L1; CY6; GPR CY6; TER1; CC chemokine receptor 8; chemokine receptor-like 1; chemokine (C-C) receptor 8; CC chemokine receptor CHEMR1; CC-chemokine receptor chemr1; chemokine (C-C) receptor-like 2; CCR-8; CKRL1; CMKBR8; GPRCY6; CMKBRL2; CC-CKR-8; MGC129966; MGC129973;
Gene ID	1237

 Tel: 1-631-559-9269 1-516-512-3133

 Email: info@creative-biomart.com  Fax: 1-631-938-8127

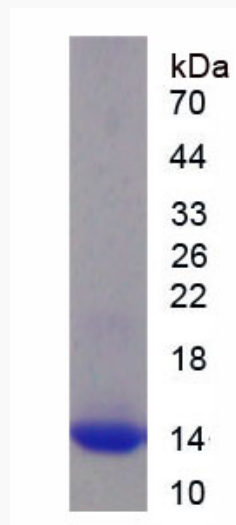
 45-1 Ramsey Road, Shirley, NY 11967, USA

mRNA Refseq [NM_005201](#)

Protein Refseq [NP_005192](#)

MIM [601834](#)

UniProt ID [P51685](#)



 Tel: 1-631-559-9269 1-516-512-3133

 Email: info@creative-biomart.com  Fax: 1-631-938-8127

 45-1 Ramsey Road, Shirley, NY 11967, USA