

Active Recombinant Human CCR8 Full Length Transmembrane protein(MNP)

Cat. No. CCR8-954H Lot. No. (See product label)

SPECIFICATION

Product Overview	Recombinant Human CCR8 Full Length Transmembrane protein(P51685), was expressed in HEK293.
Species	Human
Source	HEK293
Form	Lyophilized from nanodisc solubilization buffer (20 mM Tris-HCl, 150 mM NaCl, pH 8.0). Normally 5% – 8% trehalose is added as protectants before lyophilization. Please see Certificate of Analysis for specific instructions.
Bio-activity	CCR8 full length membrane nanoparticles samples were stained with anti-CCR8 antibody at 2 µg/mL, followed by Goat anti-human IgG 488 secondary antibody.
Molecular Mass	The human full length CCR8 Protein has a MW of 40.7 kDa.
Storage	Store at -20°C to -80°C for 12 months in lyophilized form. After reconstitution, if not intended for use within a month, aliquot and store at -80°C (Avoid repeated freezing and thawing). Lyophilized proteins are shipped at ambient temperature.
Reconstitution	It is recommended that sterile water be added to the vial to prepare a stock solution of 0.2 ug/ul. Centrifuge the vial at 4°C before opening to recover the entire contents.
Full Length	Full L.

 Tel: 1-631-559-9269 1-516-512-3133

 Email: info@creative-biomart.com  Fax: 1-631-938-8127

 45-1 Ramsey Road, Shirley, NY 11967, USA

GENE INFORMATION

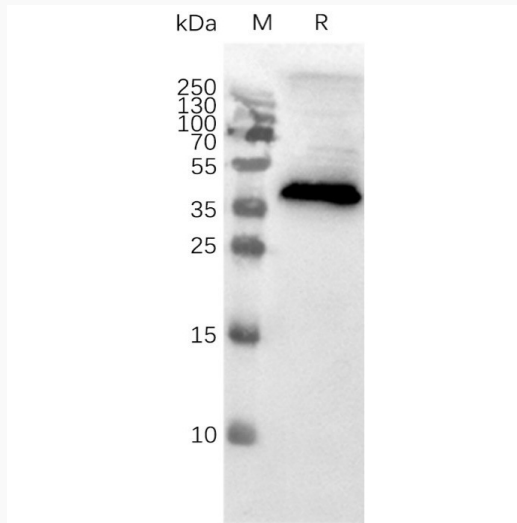
Gene Name	CCR8 chemokine (C-C motif) receptor 8 [Homo sapiens]
Official Symbol	CCR8
Synonyms	CCR8; chemokine (C-C motif) receptor 8; CMKBR8, CMKBRL2; C-C chemokine receptor type 8; CDw198; CKR L1; CY6; GPR CY6; TER1; CC chemokine receptor 8; chemokine receptor-like 1; chemokine (C-C) receptor 8; CC chemokine receptor CHEMR1; CC-chemokine receptor chemr1; chemokine (C-C) receptor-like 2; CCR-8; CKRL1; CMKBR8; GPRCY6; CMKBRL2; CC-CKR-8; MGC129966; MGC129973;
Gene ID	1237
mRNA Refseq	NM_005201
Protein Refseq	NP_005192
MIM	601834
UniProt ID	P51685

 Tel: 1-631-559-9269 1-516-512-3133

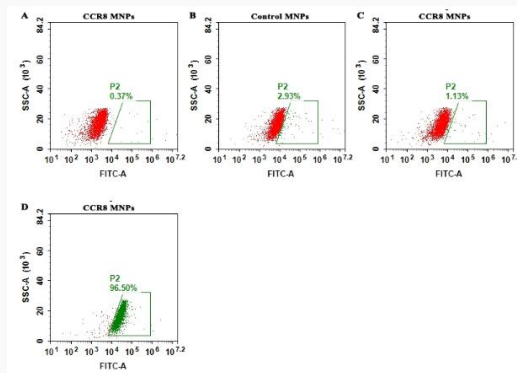
 Email: info@creative-biomart.com  Fax: 1-631-938-8127

 45-1 Ramsey Road, Shirley, NY 11967, USA

Western blot



FACS analysis



 Tel: 1-631-559-9269 1-516-512-3133

 Email: info@creative-biomart.com  Fax: 1-631-938-8127

 45-1 Ramsey Road, Shirley, NY 11967, USA