

Recombinant Full Length Human CCR9 Over-expression Lysate, Flag tagged

Cat. No. CCR9-13HCL **Lot. No.** (See product label)

SPECIFICATION

Product Overview	CCR9 HEK293T cell transient overexpression lysate (as WB positive control) with C-Flag tag was expressed in HEK293T.
Species	Human
Source	HEK293T
Description	<p>The protein encoded by this gene is a G protein-coupled receptor with seven transmembrane domains that belongs to the beta chemokine receptor family. Chemokines and their receptors are key regulators of thymocyte migration and maturation in normal and inflammation conditions. This gene is differentially expressed in T lymphocytes of the small intestine and colon, and its interaction with chemokine 25 contributes to intestinal intra-epithelial lymphocyte homing to the small intestine. This suggests a role for this gene in directing immune responses to different segments of the gastrointestinal tract. This gene and its exclusive ligand, chemokine 25, are overexpressed in a variety of malignant tumors and are closely associated with tumor proliferation, apoptosis, invasion, migration and drug resistance. This gene maps to the chemokine receptor gene cluster. Multiple transcript variants encoding different isoforms have been found for this gene.</p>
Molecular Mass	42.02 kDa
Storage	The lysate can be shipped at ambient temperature. Upon receiving, store the sample

 Tel: 1-631-559-9269 1-516-512-3133

 Email: info@creative-biomart.com  Fax: 1-631-938-8127

 45-1 Ramsey Road, Shirley, NY 11967, USA

at -20 centigrade. Lysate samples can be reconstituted with SDS Sample Buffer. Avoid repeated freeze-thaw cycles after reconstitution. Lysate samples are stable for 12 months from date of receipt when stored at -20 centigrade.

Shipping Blue Ice

GENE INFORMATION

Gene Name CCR9 chemokine (C-C motif) receptor 9 [Homo sapiens (human)]

Official Symbol CCR9

Synonyms CCR9; chemokine (C-C motif) receptor 9; GPR28; C-C chemokine receptor type 9; CDw199; GPR 9 6; G protein-coupled receptor 28; GPR-9-6; CC-CKR-9

Gene ID 10803

mRNA Refseq NM_006641


Protein Refseq NP_006632

MIM 604738

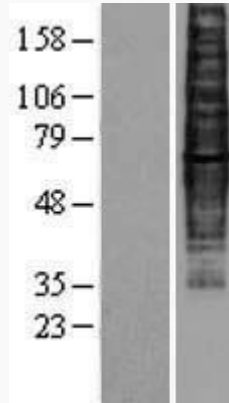
UniProt ID P51686


 Tel: 1-631-559-9269 1-516-512-3133

 Email: info@creative-biomart.com  Fax: 1-631-938-8127


 45-1 Ramsey Road, Shirley, NY 11967, USA

WB



 Tel: 1-631-559-9269 1-516-512-3133

 Email: info@creative-biomart.com  Fax: 1-631-938-8127

 45-1 Ramsey Road, Shirley, NY 11967, USA