

Recombinant Human CCS Protein, GST-Tagged

Cat. No. CCS-0707H **Lot. No.** (See product label)

SPECIFICATION

Product Overview	Human CCS full-length ORF (NP_005116.1, 1 a.a. - 274 a.a.) recombinant protein with GST-tag at N-terminal.
Species	Human
Source	Wheat Germ
Description	Copper chaperone for superoxide dismutase specifically delivers Cu to copper/zinc superoxide dismutase and may activate copper/zinc superoxide dismutase through direct insertion of the Cu cofactor. [provided by RefSeq, Jul 2008]
Molecular Mass	55.4 kDa
AA Sequence	MASDSGNQGTLCLEFAVQMTCQSCVDAVRKSLQGVAGVQDVEVHLEDQMVLVH TTLPSQEVQALLEGTRQAVLKGMGSGQLQNLGAAVAILGGPGTVQGVVRFLLQTP ERCLIEGTIDGLEPGLHGLHVHQYGDLTNNCNSCGNHFNPDGASHGGPQDSDRHR GDLGNVRADADGRAIFRMEDEQLKVWDVIGRSLIIDEGEDDLGRGGHPLSKITGNSG ERLACGIIARSAGLFQNPQKQICSCDGLTIWEERGRPIAGKGRKESAPPAHL
Applications	Enzyme-linked Immunoabsorbent Assay Western Blot (Recombinant protein) Antibody Production Protein Array
Storage	Store at -80 centigrade. Aliquot to avoid repeated freezing and thawing.

 Tel: 1-631-559-9269 1-516-512-3133

 Email: info@creative-biomart.com  Fax: 1-631-938-8127

 45-1 Ramsey Road, Shirley, NY 11967, USA

Storage Buffer 50 mM Tris-HCl, 10 mM reduced Glutathione, pH=8.0 in the elution buffer.

GENE INFORMATION

Gene Name CCS copper chaperone for superoxide dismutase [Homo sapiens]

Official Symbol CCS

Synonyms CCS; copper chaperone for superoxide dismutase; superoxide dismutase copper chaperone; MGC138260;

Gene ID 9973

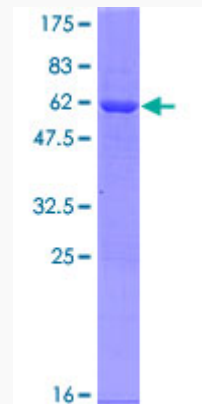
mRNA Refseq NM_005125

Protein Refseq NP_005116

MIM 603864

UniProt ID O14618

Quality Control Testing



 Tel: 1-631-559-9269 1-516-512-3133

 Email: info@creative-biomart.com  Fax: 1-631-938-8127

 45-1 Ramsey Road, Shirley, NY 11967, USA



12.5% SDS-PAGE Stained with Coomassie Blue.

 Tel: 1-631-559-9269 1-516-512-3133

 Email: info@creative-biomart.com  Fax: 1-631-938-8127

 45-1 Ramsey Road, Shirley, NY 11967, USA