

Recombinant Human CCT2 Protein (2-535 aa), His-tagged

Cat. No. CCT2-1742H Lot. No. (See product label)

SPECIFICATION

Product Overview	Recombinant Human CCT2 Protein (2-535 aa) is produced by Yeast expression system. This protein is fused with a 6xHis tag at the N-terminal. Research Area: Signal Transduction. Protein Description: Full Length of Mature Protein.
Species	Human
Source	Yeast
ProteinLength	2-535 aa
Description	Molecular chaperone; assists the folding of proteins upon ATP hydrolysis. As part of the BBS/CCT complex may play a role in the assembly of BBSome, a complex involved in ciliogenesis regulating transports vesicles to the cilia. Known to play a role, in vitro, in the folding of actin and tubulin.
Form	Tris-based buffer, 50% glycerol
Molecular Mass	59.4 kDa
AA Sequence	ASLSLAPVNIKAGADEERAETARLTSFIGAIAIGDLVKSTLGPKGMDKILLSSGRDAS LMVTNDGATILKNIGVDNPAKVLVDMRSVQDDEVGDGTTSVTVLAAELLREAESLIA KKIHPQTIAGWREATKAAREALLSSAVDHGSDEVKFRQDLMNIAGTTLSSKLLTHHK DHFTKLAVEAVLRLKSGNLEAIHIIKKLGGSLADSYLDEGFLLDKKIGVNPQKRIENA KILIAN TGMDTDKIKIFGSRVRVDSTAKVAEIEHAEKEKMKKEKVERILKHGINCFINRQL IYNYPEQLFGAAGVMAIEHADFAGVERLALVTGGEIASTFDHPELVKLGSKLIEEVM I

 Tel: 1-631-559-9269 1-516-512-3133

 Email: info@creative-biomart.com  Fax: 1-631-938-8127

 45-1 Ramsey Road, Shirley, NY 11967, USA

GEDKLIHFSGVALGEACTIVLRGATQQILDEAERSLHDALCVLAQTVKDSRTVYGGG
 CSEMLMAHAVTQLANRTPGKEAVAMESYAKALRMLPTIADNAGYDSADLVAQLRA
 AHSEGNTTAGLDMREGTIGDMAILGITESFQVKRQVLLSAAEAAEVILRVDNIIKAAPR
 KRVPDHHPC

Purity > 90% as determined by SDS-PAGE.

Notes Repeated freezing and thawing is not recommended. Store working aliquots at 4 centigrade for up to one week.

Storage The shelf life is related to many factors, storage state, buffer ingredients, storage temperature and the stability of the protein itself. Generally, the shelf life of liquid form is 6 months at -20 centigrade/-80 centigrade. The shelf life of lyophilized form is 12 months at -20 centigrade/-80 centigrade.

Concentration A hardcopy of COA with reconstitution instruction is sent along with the products.

GENE INFORMATION

Gene Name CCT2 chaperonin containing TCP1, subunit 2 (beta) [Homo sapiens]

Official Symbol CCT2

Synonyms CCT2; Cctb; CCTB; 99D8.1; PRO1633; CCT-beta; TCP-1-beta; MGC142074; MGC142076;

Gene ID 10576

mRNA Refseq NM_001198842

Protein Refseq NP_001185771

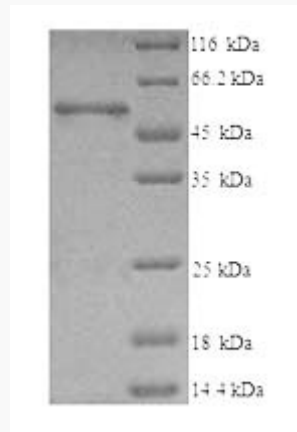
 Tel: 1-631-559-9269 1-516-512-3133

 Email: info@creative-biomart.com  Fax: 1-631-938-8127

 45-1 Ramsey Road, Shirley, NY 11967, USA

MIM 605139

UniProt ID P78371



(Tris-Glycine gel) Discontinuous SDS-PAGE (reduced) with 5% enrichment gel and 15% separation gel.

Tel: 1-631-559-9269 1-516-512-3133

Email: info@creative-biomart.com Fax: 1-631-938-8127

45-1 Ramsey Road, Shirley, NY 11967, USA