

## Recombinant Human CCT5 Protein, GST-Tagged

**Cat. No.** CCT5-0714H    **Lot. No.** (See product label)

### SPECIFICATION

<b>Product Overview</b>	Human CCT5 full-length ORF (AAH06543, 1 a.a. - 541 a.a.) recombinant protein with GST-tag at N-terminal.
<b>Species</b>	Human
<b>Source</b>	Wheat Germ
<b>Description</b>	The chaperonin containing TCP1 (MIM 186980) complex (CCT), also called the TCP1 ring complex, consists of 2 back-to-back rings, each containing 8 unique but homologous subunits, such as CCT4. CCT assists the folding of newly translated polypeptide substrates through multiple rounds of ATP-driven release and rebinding of partially folded intermediate forms. Substrates of CCT include the cytoskeletal proteins actin (see MIM 102560) and tubulin (see MIM 191130), as well as alpha-transducin (MIM 139330) (Won et al., 1998 [PubMed 9819444]).[supplied by OMIM, Mar 2008]
<b>Molecular Mass</b>	85.25 kDa
<b>AA Sequence</b>	MASMGTLAFDEYGRPFLIIKDQDRKSRLMGLEALKSHIMAAKAVANTMRTSLGPNGL DKMMVDKDGDTVTDNDGATILSMMDVDHQIAKLMVELSKSQDDEIGDGTTGVVLA GALLEEAEQLLDRGIHPRIADGYEQARVAIEHLDKISDSVLVDIKDTEPLIQTAKTTL GSKVVNSCHRQMAEIAVNAVLTVADMERRDVFELIKVEGKVGGRLEDTKLIKGVIV DKDFSHQPMPKKVEDAKIAILTCPFEPKPKTKHKLDVTSVEDYKALQKYEKEKFE MIQQIKETGANLAICQWGFDEANHLLLQNNLPAVRWVGGPEIELIAIATGGRIVPRF

 Tel: 1-631-559-9269    1-516-512-3133

 Email: [info@creative-biomart.com](mailto:info@creative-biomart.com)     Fax: 1-631-938-8127

 45-1 Ramsey Road, Shirley, NY 11967, USA

SELTAEKLGFAGLVQEISFGTTKDKMLVIEQCKNSRAVTIFIRGGNKMIIEEAKRSLHD  
 ALCVIRNLIRDNRVVYGGGAAEISCALAVSQEADKCPTLEQYAMRAFADALEVIPMAL  
 SENSGMNPIQTMTEVRARQVKEMNPALGIDCLHKGTNDMKQQHVIETLIGKKQQISL  
 ATQMVRMILKIDDIRKPGEESE

<b>Applications</b>	Enzyme-linked Immunoabsorbent Assay Western Blot (Recombinant protein) Antibody Production Protein Array
<b>Storage</b>	Store at -80 centigrade. Aliquot to avoid repeated freezing and thawing.
<b>Storage Buffer</b>	50 mM Tris-HCl, 10 mM reduced Glutathione, pH=8.0 in the elution buffer.

## GENE INFORMATION

<b>Gene Name</b>	CCT5 chaperonin containing TCP1, subunit 5 (epsilon) [ Homo sapiens ]
<b>Official Symbol</b>	CCT5
<b>Synonyms</b>	CCT5; chaperonin containing TCP1, subunit 5 (epsilon); T-complex protein 1 subunit epsilon; KIAA0098; T-complex protein 1, epsilon subunit; CCTE; CCT-epsilon; TCP-1-epsilon;
<b>Gene ID</b>	22948
<b>mRNA Refseq</b>	NM_012073
<b>Protein Refseq</b>	NP_036205
<b>MIM</b>	610150

 Tel: 1-631-559-9269 1-516-512-3133

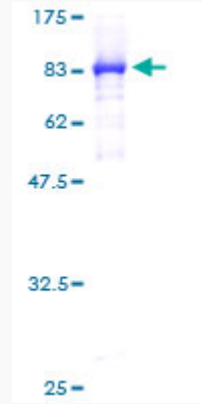
 Email: [info@creative-biomart.com](mailto:info@creative-biomart.com)  Fax: 1-631-938-8127

 45-1 Ramsey Road, Shirley, NY 11967, USA

UniProt ID

P48643

Quality Control  
Testing



12.5% SDS-PAGE Stained with Coomassie Blue.

 Tel: 1-631-559-9269 1-516-512-3133

 Email: [info@creative-biomart.com](mailto:info@creative-biomart.com)  Fax: 1-631-938-8127

 45-1 Ramsey Road, Shirley, NY 11967, USA