

Recombinant Full Length Human CCT5 Protein, C-Flag-tagged

Cat. No. CCT5-862HFL Lot. No. (See product label)

SPECIFICATION

Product Overview	Recombinant Full Length Human CCT5 Protein, fused to Flag-tag at C-terminus, was expressed in Mammalian cells.
Species	Human
Source	Mammalian Cells
Description	The protein encoded by this gene is a molecular chaperone that is a member of the chaperonin containing TCP1 complex (CCT), also known as the TCP1 ring complex (TRiC). This complex consists of two identical stacked rings, each containing eight different proteins. Unfolded polypeptides enter the central cavity of the complex and are folded in an ATP-dependent manner. The complex folds various proteins, including actin and tubulin. Mutations in this gene cause hereditary sensory and autonomic neuropathy with spastic paraplegia (HSNSP). Alternative splicing results in multiple transcript variants. Related pseudogenes have been identified on chromosomes 5 and 13.
Form	25 mM Tris HCl, pH 7.3, 100 mM glycine, 10% glycerol.
Molecular Mass	59.5 kDa
AA Sequence	MASMGTLAFDEYGRPFLIIKDQDRKSRLMGLEALKSHIMAAKAVANTMRTSLGPNGL DKMMVDKDGDTV TNDGATILSMMDVDHQIAKLMVELSKSQDDEIGDGTGVVVLA GALLEEAEQLLD RGIHP IRIADGYEQA ARVAIEHLDKISDSVLVDIKDTEPLIQ TAKTTL GSKVVNSCHRQMAEIAVNAVLTVADMERRDVFELIK VEGKVGGRLEDTKLIKGVIV

 Tel: 1-631-559-9269 1-516-512-3133

 Email: info@creative-biomart.com  Fax: 1-631-938-8127

 45-1 Ramsey Road, Shirley, NY 11967, USA



DKDFSHPQMPKKVEDAKIAILTCPFEPKPKTKHKLDVTSVEDYKALQKY EKEKFEE
 MIQQIKETGANLAICQWGFDEANHLLLQNNLPAVRWVGGPEIELIAIATGGRIVPRF
 SELTA EKLGFAGLVQEISFGTTKDKMLVIEQCKNSRAVTIFIRGGNKMIIIEAKRSLHD
 ALCVIRNLIRDNRVY GGGAAEISCALAVSQEADKCPBLEQYAMRAFADALEVIPMA
 LSENSGMNPIQTMTEVRARQVKEMNPALG
 IDCLHKGTNDMKQQHVIETLIGKKQQISLATQMVRLMILKIDDIRKPGESEETRTRPLEQ
 KLISEEDLAANDILDYKDDDDKV

Purity	> 80% as determined by SDS-PAGE and Coomassie blue staining.
Stability	Stable for 12 months from the date of receipt of the product under proper storage and handling conditions. Avoid repeated freeze-thaw cycles.
Storage	Store at -80 centigrade.
Concentration	>50 ug/mL as determined by microplate BCA method.
Preparation	Recombinant protein was captured through anti-DDK affinity column followed by conventional chromatography steps.
Protein Families	Druggable Genome
Full Length	Full L.

GENE INFORMATION

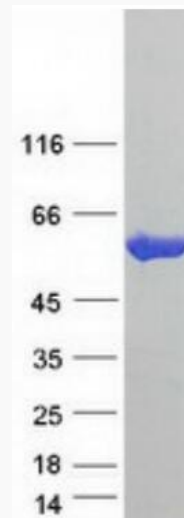
Gene Name	CCT5 chaperonin containing TCP1 subunit 5 [Homo sapiens (human)]
Official Symbol	CCT5
Synonyms	CCTE; HEL-S-69; PNAS-102; CCT-epsilon; TCP-1-epsilon

Tel: 1-631-559-9269 1-516-512-3133

Email: info@creative-biomart.com Fax: 1-631-938-8127

45-1 Ramsey Road, Shirley, NY 11967, USA

Gene ID	22948
mRNA Refseq	NM_012073.5
Protein Refseq	NP_036205.1
MIM	610150
UniProt ID	P48643



Coomassie blue staining of purified CCT5 protein.

Tel: 1-631-559-9269 1-516-512-3133

Email: info@creative-biomart.com Fax: 1-631-938-8127

45-1 Ramsey Road, Shirley, NY 11967, USA