

Recombinant Human CD14 Protein, GST-Tagged

Cat. No. CD14-0721H **Lot. No.** (See product label)

SPECIFICATION

Product Overview	Human CD14 full-length ORF (AAH10507, 1 a.a. - 375 a.a.) recombinant protein with GST-tag at N-terminal.
Species	Human
Source	Wheat Germ
Description	The protein encoded by this gene is a surface antigen that is preferentially expressed on monocytes/macrophages. It cooperates with other proteins to mediate the innate immune response to bacterial lipopolysaccharide. Alternative splicing results in multiple transcript variants encoding the same protein. [provided by RefSeq, Mar 2010]
Molecular Mass	66.99 kDa
AA Sequence	MERASCLLLLLLPLVHVSATTPEPCELDDEDFRCVCNFSEPQPDWSEAFQCVS VEIHAGGLNLEPFLKRVDADADPRQYADTVKALRVRRRLTVGAAQVPAQLLVGALRVL AYSRLKELTLEDLKITGTMPPLEATGLALSSLRLRNVSATGRSWLAELQQWLKP GLKVLSIAQAHSPAFSCEQVRAFPALTSLDLSDNPGLGERGLMAALCPHKFPAIQDL ALRNTGMETPTGVCAALAAAGVQPHSLDLSHNSLRATVNPSAPRCMWSSALNSLNL SFAGLEQVPKGLPAKLRVLDLSCNRLNRAPQPDELPEVDNLTLDGNPFLVPGTALPH EGSMNSGVVPACARSTLSVGVSGTLVLLQGARGFA
Applications	Enzyme-linked Immunoabsorbent Assay Western Blot (Recombinant protein)

 Tel: 1-631-559-9269 1-516-512-3133

 Email: info@creative-biomart.com  Fax: 1-631-938-8127

 45-1 Ramsey Road, Shirley, NY 11967, USA

Antibody Production
Protein Array

Storage Store at -80 centigrade. Aliquot to avoid repeated freezing and thawing.

Storage Buffer 50 mM Tris-HCl, 10 mM reduced Glutathione, pH=8.0 in the elution buffer.

GENE INFORMATION

Gene Name CD14 CD14 molecule [Homo sapiens]

Official Symbol CD14

Synonyms CD14; CD14 molecule; CD14 antigen; monocyte differentiation antigen CD14; myeloid cell-specific leucine-rich glycoprotein;

Gene ID 929

mRNA Refseq NM_000591

Protein Refseq NP_000582

MIM 158120

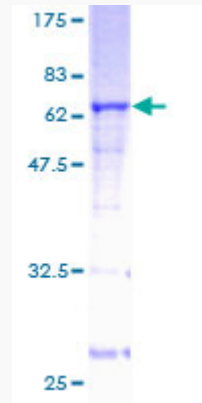
UniProt ID P08571

 Tel: 1-631-559-9269 1-516-512-3133

 Email: info@creative-biomart.com  Fax: 1-631-938-8127

 45-1 Ramsey Road, Shirley, NY 11967, USA

**Quality Control
Testing**



12.5% SDS-PAGE Stained with Coomassie Blue.

 Tel: 1-631-559-9269 1-516-512-3133

 Email: info@creative-biomart.com  Fax: 1-631-938-8127

 45-1 Ramsey Road, Shirley, NY 11967, USA