

Recombinant Human CD14 Protein, C-His-tagged

Cat. No. CD14-179H Lot. No. (See product label)

SPECIFICATION

| | |
|-------------------------|---|
| Product Overview | Recombinant Human CD14 Protein with C-His tag was expressed in E. coli. |
| Species | Human |
| Source | E.coli |
| Description | CD14 is a leucine-rich repeat-containing pattern recognition receptor with expression largely restricted to the monocyte/macrophage cell lineage. Research studies have shown that CD14 is a bacterial lipopolysaccharide (LPS) binding glycoprotein, expressed as either a GPI-linked membrane protein or a soluble plasma protein. LPS induces an upregulation of GPI-linked CD14 expression, which facilitates TLR4 signaling and macrophage activation in response to bacterial infection. The 61D3 antibody is widely used to identify cells of the monocyte/macrophage lineage. |
| Molecular Mass | ~36 kDa |
| AA Sequence | TTPEPCELDDDFRCVCNCFSEPQPDWSEAFQCVS AVEVEIHAGGLNLEPFLKRVDA DADPRQYADTVKALRVRRLTVGAAQVPAQLLVGALRVLAYSRLKELTLEDLKITGTM PPLPLEATGLALSSLRLRNVSATGRSWLAELQQWLKPKGLKVL SIAQAHSPAFSCE QVRAFPAITSLDLSDNPG LGERGLMAALCPHKFPAIQNLALRNTGMETPTGVCAALA AAGVQPHSLDL SHNSLRATVNPSAPRCMWSSALNSL NLSFAGLEQV PKGLPAKLRV LDLSCNRLNRAPQPDELPEVDNLTL DGNPFLVPGTALPHEGSMN |
| Purity | Transferred into competent cells and the supernatant was purified by NI column affinity chromatography and the purity is > 85% (by SDS-PAGE). |

 Tel: 1-631-559-9269 1-516-512-3133

 Email: info@creative-biomart.com  Fax: 1-631-938-8127

 45-1 Ramsey Road, Shirley, NY 11967, USA

| | |
|-----------------------|--|
| Notes | For research use only, not for use in diagnostic procedure. |
| Storage | Store at 4 centigrade short term. Aliquot and store at -20 centigrade long term. Avoid freeze-thaw cycles. |
| Concentration | ≥0.5 mg/mL |
| Storage Buffer | PBS, 4M Urea, pH7.4 |

GENE INFORMATION

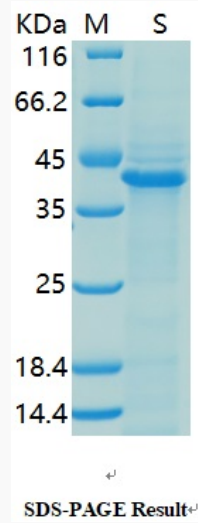
| | |
|------------------------|--|
| Gene Name | CD14 CD14 molecule [Homo sapiens (human)] |
| Official Symbol | CD14 |
| Synonyms | CD14; CD14 molecule; CD14 antigen; monocyte differentiation antigen CD14; myeloid cell-specific leucine-rich glycoprotein; |
| Gene ID | 929 |
| mRNA Refseq | NM_000591 |
| Protein Refseq | NP_000582 |
| MIM | 158120 |
| UniProt ID | P08571 |

 Tel: 1-631-559-9269 1-516-512-3133

 Email: info@creative-biomart.com  Fax: 1-631-938-8127

 45-1 Ramsey Road, Shirley, NY 11967, USA

SDS-PAGE



 Tel: 1-631-559-9269 1-516-512-3133

 Email: info@creative-biomart.com  Fax: 1-631-938-8127

 45-1 Ramsey Road, Shirley, NY 11967, USA