

## Active Recombinant Human CD14 protein, His-tagged

Cat. No. CD14-284H Lot. No. (See product label)

### SPECIFICATION

<b>Product Overview</b>	Recombinant Human CD14 protein(NP_000582.1)(Met1-Ala375), fused with His tag, was expressed in HEK293.
<b>Species</b>	Human
<b>Source</b>	HEK293
<b>ProteinLength</b>	Met1-Ala375
<b>Form</b>	Lyophilized from 0.22 µm filtered solution in PBS, pH7.4.
<b>Bio-activity</b>	When Recombinant Human CD14/His Protein is immobilized at 5g/mL (100 µ/well), the concentration of Anti-Human CD14 [Atibuclimab Biosimilar] that produces 50% of the optimal binding response is approximately 0.25ug/ml.
<b>Molecular Mass</b>	The protein has a calculated MW of 36kDa.The reducing (R) heterodimer protein migrates as 35-60 kDa due to glycosylation
<b>Endotoxin</b>	<1EU/mg
<b>Purity</b>	SDS-PAGE>95%
<b>Storage</b>	Store at -20°C.
<b>Reconstitution</b>	sterile H43O

 Tel: 1-631-559-9269 1-516-512-3133

 Email: [info@creative-biomart.com](mailto:info@creative-biomart.com)  Fax: 1-631-938-8127

 45-1 Ramsey Road, Shirley, NY 11967, USA

## GENE INFORMATION

**Gene Name** CD14 CD14 molecule [ Homo sapiens ]

**Official Symbol** CD14

**Synonyms** CD14; CD14 molecule; CD14 antigen; monocyte differentiation antigen CD14; myeloid cell-specific leucine-rich glycoprotein;

**Gene ID** 929

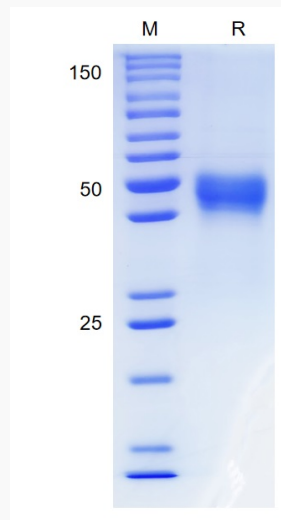
**mRNA Refseq** NM\_000591

**Protein Refseq** NP\_000582

**MIM** 158120

**UniProt ID** P08571

### SDS-PAGE

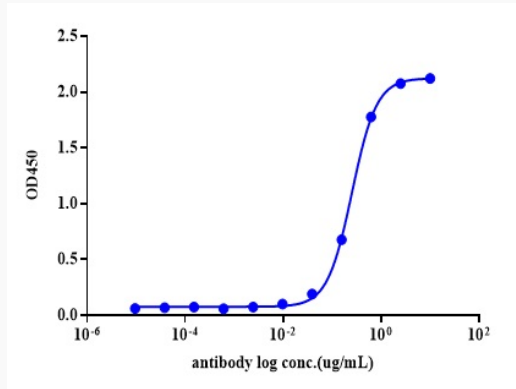


Tel: 1-631-559-9269 1-516-512-3133

Email: [info@creative-biomart.com](mailto:info@creative-biomart.com) Fax: 1-631-938-8127

45-1 Ramsey Road, Shirley, NY 11967, USA

ELISA



 Tel: 1-631-559-9269 1-516-512-3133

 Email: [info@creative-biomart.com](mailto:info@creative-biomart.com)  Fax: 1-631-938-8127

 45-1 Ramsey Road, Shirley, NY 11967, USA