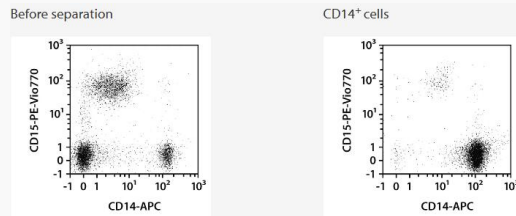


Leukopak CD14 protein-coupled magnetic MicroBeads

Cat. No. CD14-2913M Lot. No. (See product label)

SPECIFICATION

Species	Human
Capacity	for 0.5 Leukopaks
Background	The CD14 antigen belongs to the LPS receptor complex. It is strongly expressed on most monocytes and macrophages and weakly on neutrophils.
Application	The purified CD14+ cells are well suited for further flow cytometric, functional, or molecular analysis.



Analysis

Separation of a Leukopak sample using the StraightFrom Leukopak CD14 MicroBead Kit and the MultiMACS Cell24 Separator Plus with the Multi-24 Column Block. Cells were fluorescently stained with CD14-APC, CD15-PE-Vio 770, as well as CD45-VioBlue and analyzed by flow cytometry using the MACSQuant Analyzer. Cell debris and dead cells were excluded from the analysis based on scatter signals and propidium iodide fluorescence.

 Tel: 1-631-559-9269 1-516-512-3133

 Email: info@creative-biomart.com  Fax: 1-631-938-8127

 45-1 Ramsey Road, Shirley, NY 11967, USA