

Active Recombinant Human CD14 protein, mFc-tagged

Cat. No. CD14-4823H Lot. No. (See product label)

SPECIFICATION

Product Overview	Recombinant Human CD14 protein(NP_000582.1)(Met1-Ala375), fused with mFc tag, was expressed in HEK293.
Species	Human
Source	HEK293
ProteinLength	Met1-Ala375
Form	Lyophilized from 0.22 µm filtered solution in PBS, pH7.4.
Bio-activity	When Recombinant Human CD14/mFC Protein is immobilized at 5g/mL (100 µ/well), the concentration of Anti-Human CD14 [Atibuclimab Biosimilar] that produces 50% of the optimal binding response is approximately 0.4 ug/ml.
Molecular Mass	The protein has a calculated MW of 61kDa.The reducing (R) heterodimer protein migrates as 70-85 kDa due to glycosylation
Endotoxin	<1EU/mg
Purity	SDS-PAGE>90%
Storage	Store at -20°C.
Reconstitution	sterile H44O

 Tel: 1-631-559-9269 1-516-512-3133

 Email: info@creative-biomart.com  Fax: 1-631-938-8127

 45-1 Ramsey Road, Shirley, NY 11967, USA

GENE INFORMATION

Gene Name CD14 CD14 molecule [Homo sapiens]

Official Symbol CD14

Synonyms CD14; CD14 molecule; CD14 antigen; monocyte differentiation antigen CD14; myeloid cell-specific leucine-rich glycoprotein;

Gene ID 929

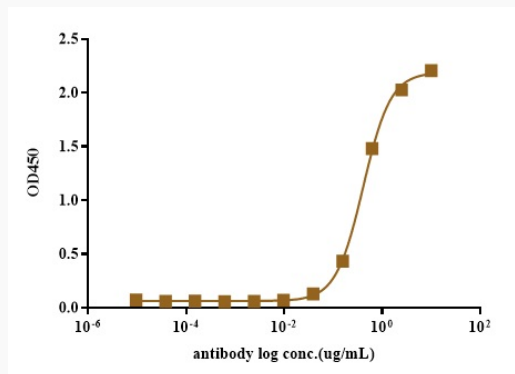
mRNA Refseq NM_000591

Protein Refseq NP_000582

MIM 158120

UniProt ID P08571

SDS-PAGE

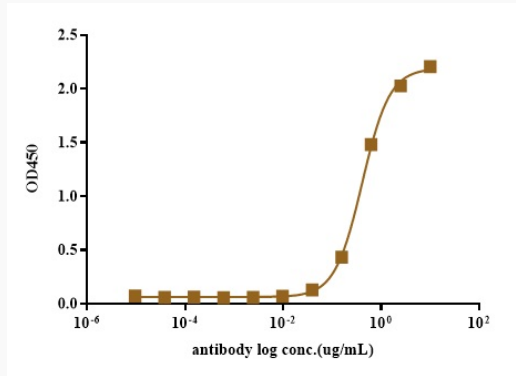


 Tel: 1-631-559-9269 1-516-512-3133

 Email: info@creative-biomart.com  Fax: 1-631-938-8127

 45-1 Ramsey Road, Shirley, NY 11967, USA

ELISA



 Tel: 1-631-559-9269 1-516-512-3133

 Email: info@creative-biomart.com  Fax: 1-631-938-8127

 45-1 Ramsey Road, Shirley, NY 11967, USA