

CD14 protein-coupled magnetic MicroBeads

Cat. No. CD14-5032M **Lot. No.** (See product label)

SPECIFICATION

Species Human

Capacity for 1×10⁹ total cells

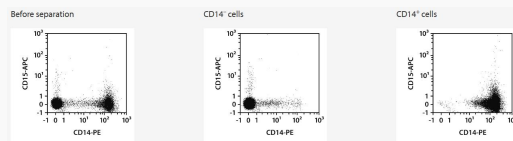
Background

The CD14 antigen belongs to the LPS receptor complex. Binding of antibody to CD14 does not trigger signal transduction since CD14 lacks a cytoplasmatic domain. CD14 is strongly expressed on most monocytes, macrophages, and weakly on neutrophils and some myeloid dendritic cells.

Application

CD14 MicroBeads UltraPure can be used for a variety of applications, for example: Ex vivo differentiation into monocyte-derived dendritic cells (Mo-DCs) or monocyte-derived macrophages.
 Studies on monocyte activation, differentiation, cytokine secretion etc.
 Studies on compound or antigen uptake (e.g. phagocytosis) and antigen presentation by monocytes.

Analysis



CD14⁺ cells were isolated from human PBMCs using CD14 MicroBeads UltraPure, an MS Column, and a MiniMACS Separator. Cells were fluorescently stained with CD14-PE and CD15-APC and analyzed by flow cytometry using the MACSQuant Analyzer. Cell debris and dead cells were excluded from the analysis based on

 Tel: 1-631-559-9269 1-516-512-3133

 Email: info@creative-biomart.com  Fax: 1-631-938-8127

 45-1 Ramsey Road, Shirley, NY 11967, USA



scatter signals and propidium iodide fluorescence.

 Tel: 1-631-559-9269 1-516-512-3133

 Email: info@creative-biomart.com  Fax: 1-631-938-8127

 45-1 Ramsey Road, Shirley, NY 11967, USA