

# Recombinant Human CD14 Protein, Myc/DDK-tagged, C13 and N15-labeled

**Cat. No.** CD14-6224H    **Lot. No.** (See product label)

## SPECIFICATION

<b>Product Overview</b>	CD14 MS Standard C13 and N15-labeled recombinant protein (NP_001035110) with a C-terminal MYC/DDK tag, was expressed in HEK293 cells.
<b>Species</b>	Human
<b>Source</b>	HEK293
<b>Description</b>	The protein encoded by this gene is a surface antigen that is preferentially expressed on monocytes/macrophages. It cooperates with other proteins to mediate the innate immune response to bacterial lipopolysaccharide. Alternative splicing results in multiple transcript variants encoding the same protein.
<b>Molecular Mass</b>	40.1 kDa
<b>AA Sequence</b>	MERASCLLLLLLPLVHVSATTPEPCELDDEDFRCVCNFSEPQPDWSEAFQCVS VEIHAGGLNLEPFLKRVDADADPRQYADTVKALRVRRRLTVGAAQVPAQLLVGALRVL AYSRLKELTLEDLKITGTMPPLEATGLALSSLRLRNVS WATGRSWLAELQQWLKPLGLKVLSIAQAHSPAFSCEQVRAFPALTS LDLSDNPGLGERGLMAALCPHKFPAIQNLALRNTGMETPTGVCAALAAAGVQPHSLDLS HNSLRATVNPSAPRCMWSSALNSLNSFAGLEQVPKGLPAKLRVLDLSCNRLNRAPQP DELPEVDNLTLDGNPFLVPGTALPHEGSMNSGVVPACARSTLSVGVSGTLVLLQGARGFATRTR PLEQKLISEEDLAANDILDYKDDDDKV
<b>Purity</b>	> 80% as determined by SDS-PAGE and Coomassie blue staining

 Tel: 1-631-559-9269    1-516-512-3133

 Email: [info@creative-biomart.com](mailto:info@creative-biomart.com)     Fax: 1-631-938-8127

 45-1 Ramsey Road, Shirley, NY 11967, USA

<b>Stability</b>	Stable for 3 months from receipt of products under proper storage and handling conditions.
<b>Storage</b>	Store at -80 centigrade. Avoid repeated freeze-thaw cycles.
<b>Concentration</b>	50 µg/mL as determined by BCA
<b>Storage Buffer</b>	100 mM glycine, 25 mM Tris-HCl, pH 7.3.

## GENE INFORMATION

<b>Gene Name</b>	CD14 CD14 molecule [ Homo sapiens (human) ]
<b>Official Symbol</b>	CD14
<b>Synonyms</b>	CD14; CD14 molecule; CD14 antigen; monocyte differentiation antigen CD14; myeloid cell-specific leucine-rich glycoprotein;
<b>Gene ID</b>	929
<b>mRNA Refseq</b>	NM_001040021
<b>Protein Refseq</b>	NP_001035110
<b>MIM</b>	158120
<b>UniProt ID</b>	P08571

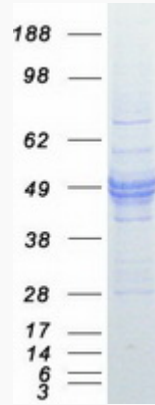
 Tel: 1-631-559-9269 1-516-512-3133

 Email: [info@creative-biomart.com](mailto:info@creative-biomart.com)  Fax: 1-631-938-8127

 45-1 Ramsey Road, Shirley, NY 11967, USA



SDS-PAGE



Tel: 1-631-559-9269 1-516-512-3133

Email: [info@creative-biomart.com](mailto:info@creative-biomart.com) Fax: 1-631-938-8127

45-1 Ramsey Road, Shirley, NY 11967, USA