

Whole Blood CD14 protein-coupled magnetic MicroBeads

Cat. No. CD14-8612M Lot. No. (See product label)

SPECIFICATION

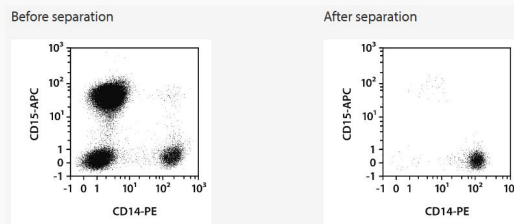
Species Human

Capacity for 40 mL whole blood

Background The CD14 antigen belongs to the LPS receptor complex. It is strongly expressed on most monocytes and macrophages and weakly on neutrophils.

Application StraightFrom Whole Blood MicroBeads allow the fast isolation of CD14+ cells directly from whole blood or bone marrow, thus minimizing hands-on time and maximizing yield of target cells. StraightFrom Whole Blood MicroBeads in combination with the autoMACS Separators allow standardization of the cell separation procedure and safer handling of hazardous samples. The purified CD14+ cells are well-suited for further flow cytometric, functional, or molecular analysis including lineage-specific chimerism analysis after allogeneic stem cell transplantation.

Analysis



Separation of a whole blood sample using the StraightFrom Whole Blood CD14 MicroBeads and the MultiMACS Cell24 Separator Plus with the Single-Column Adapter and Whole Blood Columns without washing step after labeling. Cells were

Tel: 1-631-559-9269 1-516-512-3133

Email: info@creative-biomart.com Fax: 1-631-938-8127

45-1 Ramsey Road, Shirley, NY 11967, USA

fluorescently stained with CD15-APC, CD14-PE, as well as CD45-VioBlue and analyzed by flow cytometry using the MACSQuant Analyzer. Cells were triggered via CD45-VioBlue, cell debris and dead cells were excluded from the analysis based on scatter signals and propidium iodide fluorescence.

 Tel: 1-631-559-9269 1-516-512-3133

 Email: info@creative-biomart.com  Fax: 1-631-938-8127

 45-1 Ramsey Road, Shirley, NY 11967, USA